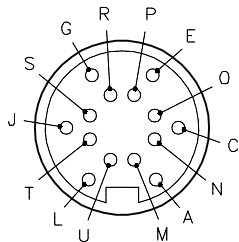



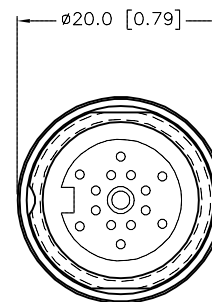
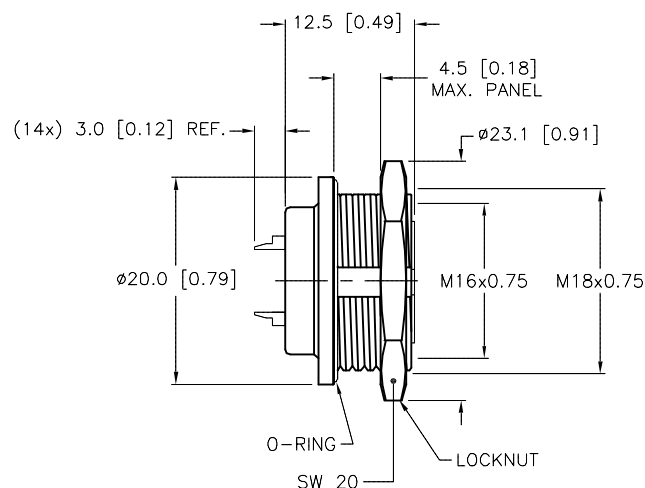
FEMALE END VIEW



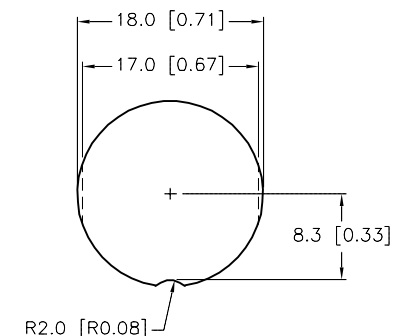
 M16 connector

SPECIFICATIONS

CONTACT CARRIER MATERIAL	NYLON
CONTACT MATERIAL/PLATING	BRONZE/GOLD
HOUSING MATERIAL/PLATING	BRASS/NICKEL
RATED CURRENT [A]	3.0 A
RATED VOLTAGE [V]	30 VAC/VDC
MAX WIRE SIZE [AWG]	24 AWG
TEMPERATURE RANGE	-30°C to +95°C (-22°F to +203°F)
PROTECTION CLASS	MEETS IEC IP67

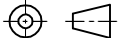



END VIEW
LOCKNUT NOT SHOWN



MOUNTING HOLE

SOURCE DRAWING - FOR REFERENCE ONLY

RELATED DOCUMENTS 1. 2. 3. 4.	3RD ANGLE PROJECTION			THIS DRAWING IS CONFIDENTIAL AND THE PROPERTY OF TURCK INC. USE OF THIS DOCUMENT WITHOUT WRITTEN PERMISSION IS PROHIBITED.				3000 CAMPUS DRIVE MINNEAPOLIS, MN 55441 1-800-544-7769 (763) 553-7300 (763) 553-0708 fax www.turck.us	
	MATERIAL	ALL DIMENSIONS DISPLAYED ON THIS DRAWING ARE FOR REFERENCE ONLY	DRFT	RDS	DATE	05/15/09	DESCRIPTION BKFD 14		
	SEE SPECIFICATIONS		APVD		SCALE	1=.7			
FINISH	CONTACT TURCK FOR MORE INFORMATION		UNIT OF MEASUREMENT MILLIMETER [INCH]			IDENTIFICATION NO.		REV	
SEE SPECIFICATIONS						U0933		B	
		DO NOT SCALE THIS DRAWING			FILE: U0933		SHEET 1 OF 1		

B	UPDATE RATED VOLTAGE	NF	02/06/19	68555
REV	DESCRIPTION	BY	DATE	ECO NO.