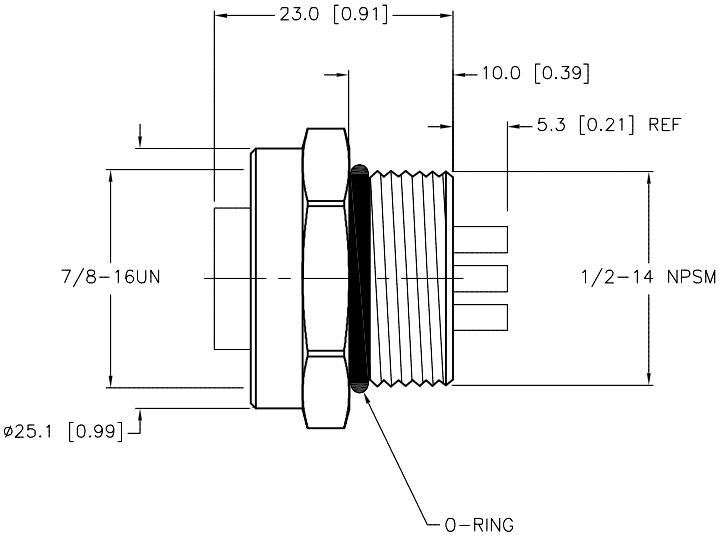
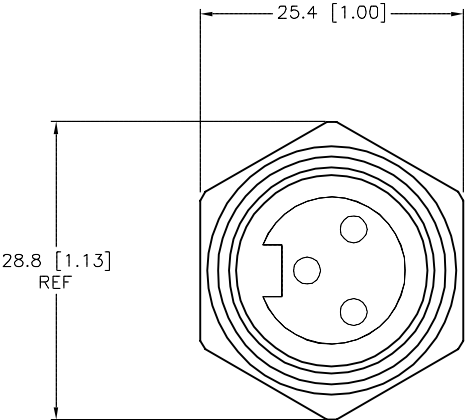


FEMALE END VIEW

SPECIFICATIONS	
CONTACT CARRIER MATERIAL	TPU
CONTACT MATERIAL/PLATING	BRASS/GOLD
HOUSING MATERIAL/PLATING	BRASS/NICKEL
O-RING MATERIAL	NITRILE
RATED CURRENT [A]	9.0 A
RATED VOLTAGE [V]	600 V
TERMINATION, SOLDER CUPS	UP TO 16 AWG MAX
TEMPERATURE RANGE	-40°C to +80°C (-40°F to +176°F)
PROTECTION CLASS	MEETS NEMA 1,3,4,6P AND IEC IP67



SOURCE DRAWING - FOR REFERENCE ONLY

RELATED DOCUMENTS		3RD ANGLE PROJECTION		THIS DRAWING IS CONFIDENTIAL AND THE PROPERTY OF TURCK INC. USE OF THIS DOCUMENT WITHOUT WRITTEN PERMISSION IS PROHIBITED.		<div></div> <div>3000 CAMPUS DRIVE MINNEAPOLIS, MN 55441 1-800-544-7769 (763) 553-7300 (763) 553-0708 fax www.turck.us</div>			
1.				DRFT	RDS	DATE	12/23/09	DESCRIPTION RKFL 36	
2.				APVD		SCALE	1=.8		
3.		MATERIAL	SEE SPECIFICATIONS	ALL DIMENSIONS DISPLAYED ON THIS DRAWING ARE FOR REFERENCE ONLY		UNIT OF MEASUREMENT MILLIMETER [INCH]		IDENTIFICATION NO. U5515-10	REV A
4.		FINISH	SEE SPECIFICATIONS			CONTACT TURCK FOR MORE INFORMATION			
A	DRAWING RELEASE	RDS	01/04/10			DO NOT SCALE THIS DRAWING		FILE: U5515-10	SHEET 1 OF 1
REV	DESCRIPTION	BY	DATE	ECO. NO.					