

CKA - MKA and CKAX - MKAX standard metallic version

inserts		page:
CK	3 poles + ⊕	58
CK	4 poles + ⊕	58
CKS	3 poles + ⊕	-
CKS	4 poles + ⊕	-
CKSH	3 poles + ⊕	63
CKSH	4 poles + ⊕	63
CD	8 poles	67
CQ4	2 poles + ⊕	182
CQ4 H	2 poles + ⊕	183
CQ4	3 poles + ⊕	184
CQ	5 poles + ⊕	186
CQ	7 poles + ⊕	187
CQ	12 poles + ⊕	189
CQ	21 poles + ⊕	190

only for ILS/ILSA housings (if the counterpart has glued gasket):

CJ KF/M	223
CJK 8FT/8MT	226
CJK 8IFT/8IMT	226, 228
CJK 8M	233
CUK 2FT	236
CUK 3FT	236
CLK 04 SC	239
CX 1/2 BD	243

angled bulkhead mounting housings



bulkhead mounting housings with SELF-CLOSING cover

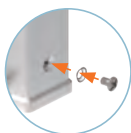


description	part No. (entry M20 / M25)	part No.
galvanized steel lever, M20 fixing thread ^(*) 1)	MKA IAF20	
stainless steel lever, M20 fixing thread ^(*) 1)	MKAX IAF20	
galvanized steel lever, M25 fixing thread ^(*) 1)	MKA IAF25	
stainless steel lever, M25 fixing thread ^(*) 1)	MKAX IAF25	
with stainless steel lever and gasket, for female inserts		CKAX 03 ILS
with stainless steel lever, for male inserts		CKAX 03 ILSA
with galvanized steel lever and gasket, for female inserts		CKA 03 ILS
with galvanized steel lever, for male inserts		CKA 03 ILSA
gasket and screw kit for IP66/IP67/IP69 ¹⁾	CKR 65	CKR 65
gasket and screw kit for IP66/IP67/IP69 ¹⁾ specific for CD 08 inserts	CKR 65 D	CKR 65 D

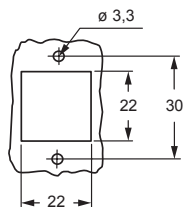
¹⁾ To obtain the IP66/IP67/IP69 degree of protection, a kit with insert fixing screw and gasket can be purchased separately.
Several inserts size "21.21" are already supplied with fixing screw and gasket, which ensures IP66/IP67/IP69 degree of protection. See list below, not including any special version:

- CQF/M 07, CQF/M 12
- CJ KF/M
- CJK 8FT /8IFT /8MT /8IMT, CJK 8M
- CUK 2FT /3FT
- CX 1/2 BDF/M
- CLK 04 SCF /SCF-H /SCM
- CXL 2/4 PF /PM /PFH /PMH /SF /SM, CXL SF/M.

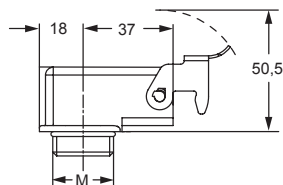
NOTE: Housing type and colour may vary upon specific part No.



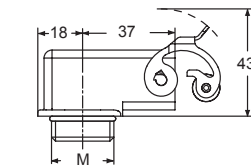
panel cut-out for enclosures CKA ILS/ILSA



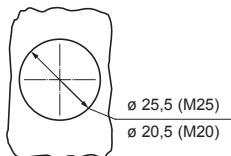
MKA IAF



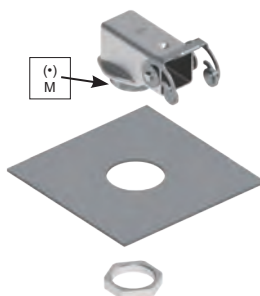
MKAX IAF



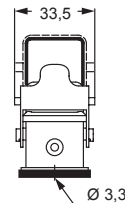
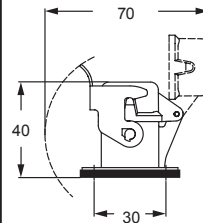
panel cut-out



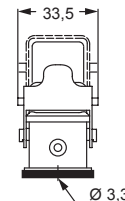
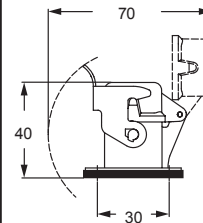
USE OF THE LOCKNUT



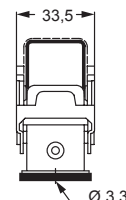
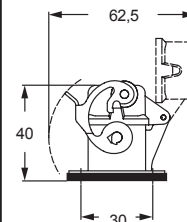
CKA ILS



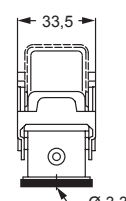
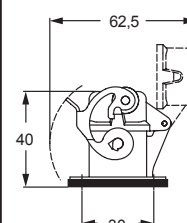
CKA ILSA



CKAX ILS



CKAX ILSA



CE **UL** **US**

Type 12
Type 4/4X only
with CKR 65 (D)



IP66/IP67/IP69 with CKR 65 (D) ¹⁾