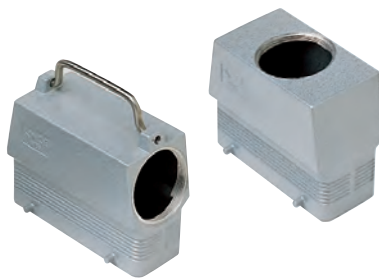


**CQ and MQ C-TYPE standard version**

inserts		page:
CD	64 poles + ⊕	72
CDD	108 poles + ⊕	81
CDS	42 poles + ⊕	-
CDSH	42 poles + ⊕	89
CNE	24 poles + ⊕	113
CSE	24 poles + ⊕	-
CSH	24 poles + ⊕	113
CSH S	24 poles + ⊕	125
CCE	24 poles + ⊕	133
CMSH	10+2 (aux) poles + ⊕	140
CMCE	10+2 (aux) poles + ⊕	141
CSS	24 poles + ⊕	151
CQE	46 poles + ⊕	171
CQEE	64 poles + ⊕	177
CX	4/8 and 6/6 poles + ⊕	204 and 206
MIXO	6 modules	262 - 317

enlarged hoods,  
side or top entry with 4 pegs



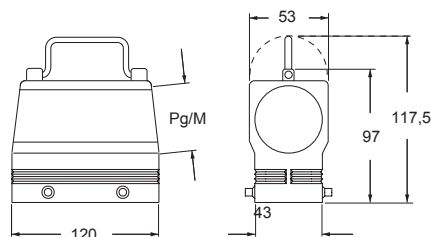
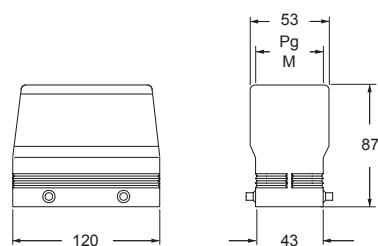
description	part No.	entry Pg	part No	entry M
used with enclosures size "104.27"				
with pegs for two levers, side entry, without adapter <sup>1)</sup>	<b>CQO 24</b>	36	<b>MQO 24.40</b>	40
with pegs for two levers, top entry, without adapter <sup>1)</sup>	<b>CQV 24</b>	36	<b>MQV 24.40</b>	40

<sup>1)</sup> enclosure without adapter, threaded on the body,  
to be used only with a complete cable gland.

IP degrees are according to the type of lever of the  
counterpart enclosures.

Alternatively, hoods with pegs may be coupled with  
fixed enclosures:

- C-TYPE, IP65 or IP66/IP69 stainless steel lever,  
from page 412 to page 422
- C7, IP66/**IP67**/IP69 stainless steel lever, page 441
- CV, IP65 or IP66/IP69 stainless steel lever, page 460  
and 461

**CQO and MQO****CQV and MQV**

**CALUS**® Type  
4/4X/12



insulating cable gland or fittings  
without gasket



cable gland with O-Ring gasket  
according to the type of lever