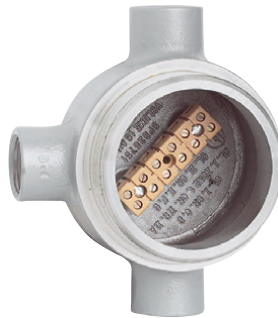




## ALUMINUM OUTLET BODIES WITH TERMINAL BLOCK - UL / CSA



GECCT-2-6TB



Class I, Div. 1 & 2, Groups B, C, D  
 Class I, Zones 1 & 2, Groups IIB, IIA  
 Class II, Div. 1 & 2, Groups E, F, G  
 Class III, Type 3, 4 & 4X

UL LISTED - File E10514

CSA Certified - File LR11716

## FEATURES-SPECIFICATIONS

## Applications

GE series conduit boxes with terminals are installed in conduit systems within hazardous areas to:

- Protect conductors in threaded rigid conduit
- Act as pull and splice boxes
- Interconnect lengths of conduit
- Change conduit direction
- Provide access to conductors for maintenance and future system changes
- Used to link electrical wires. Primary circuit brought into the enclosure is distributed to field control devices or sensors

## Features

- Water shedding cover-suitable for wet locations when mounted in upright position
- External cover threads on body protecting conductors from damage during pulling
- No pinching of conductors during cover installation

- Three different hub arrangements
- Taper threaded hubs to provide ground continuity
- Smooth integral hub bushing to protect conductor insulation when pulling
- Weather-resistant finish
- Green ground screw standard in all boxes
- Weidmuller 6 point MK3 terminal block is mounted inside box on raised pads
- Type 4 "O" Ring Standard

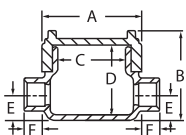
- Terminal rated 300V max/20 AMP/for wire size #22--12AWG
- Hub type XTF furnished with mounting flange

## Material/Finish

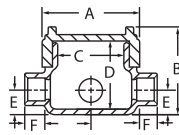
- Body and cover are copper-free aluminum (less than 4/10 of 1%)
- Finish-Electrostatically applied powder coating

GE SERIES OUTLET BOX WITH 6 POINT TERMINAL BLOCK

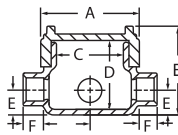
HUB TYPE	CATALOG NUMBER	HUB SIZE	A	B	C	D	E	F	COVER OPENING	VOLUME CU. IN.
C	GECCT-2-6TB	3/4"	3-11/16" (94)	3-5/8" (92)	2-11/16" (68)	2-3/4" (70)	1" (25)	13/16" (21)	2-11/16" (68)	19
T	GECTT-2-6TB	3/4"								
X	GECXT-2-6TB	3/4"								
XTF	GECXTF-2-6TB	3/4"								



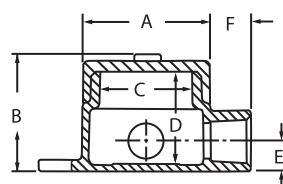
C Type



T Type



X Type

XTF Type  
With Mounting Flange