

SIMATIC IFP1500 Flat Panel 15" display (16:10), without touch, only display, Standard up to 5 m, 1280x 800 pixels, for 24 V DC, display port/DVI interface incl. DVI cable 1.8 m

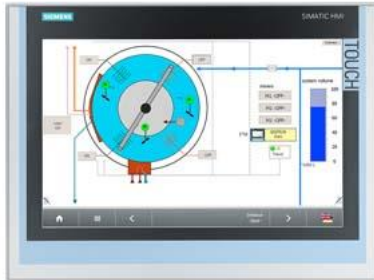


Figure similar

General information	
Product type designation	IFP1500
Short designation	Flat Panel 15" display
Display	
Design of display	TFT widescreen display, LED backlighting
Screen diagonal	15.4 in; 15"
Screen diagonal [cm]	40 cm
Display width	331.2 mm
Display height	207 mm
On Screen Display (OSD) configuration	No; Adjustable by means of software
Number of colors	16 777 216; 24 bit
Viewing angle	170° x 170°
Resolution (pixels)	
• Image resolution	1 280 x 800
• Horizontal image resolution	1 280 pixel
• Vertical image resolution	800 pixel
• Pixel size, horizontal	0.259 mm
• Pixel size, vertical	0.259 mm
General features	
• Brightness/contrast	400 cd/m ² / 1 000:1
• non-reflective and tempered mineral glass screen	Yes
• Detachable from computer unit	5 m
• Luminance	400 cd/m ²
Backlighting	
• Type of backlighting	LED
• MTBF backlighting (at 25 °C)	50 000 h; At 25°C
• Backlight dimmable	Yes; 0-100 %
Control elements	
Control elements	none
Input device	
• Integrated mouse cursor control	No
Keyboard fonts	
• Function keys	No
— Number of function keys	0
Touch operation	
• Design as touch screen	No

Installation type/mounting	
Design	Built-in unit
Front mounting	Yes
Built-in unit	Yes; Portrait mode possible
maximum permitted forward tilt angle from vertical	35°
maximum permitted backward tilt angle from vertical	35°
Supply voltage	
Type of supply voltage	DC
Rated value (DC)	24 V
permissible range, lower limit (DC)	19.2 V
permissible range, upper limit (DC)	28.8 V
Power loss	
Power loss, typ.	40 W
Power loss, max.	65 W
Interfaces	
USB on the rear	Yes; 2x onboard
Video interfaces	
• analog video signal (VGA)	No
• DVI-D	Yes
• DisplayPort	Yes; DisplayPort V1.1
Touch interfaces	
• USB	No
Degree and class of protection	
IP (at the front)	IP65
NEMA (front)	
• Enclosure Type 4 at the front	Yes
Standards, approvals, certificates	
CE mark	Yes
cULus	Yes; Corresponds to UL 508
RCM (formerly C-TICK)	Yes
KC approval	Yes
Use in hazardous areas	
• FM Class I Division 2	Yes
Ambient conditions	
Ambient temperature during operation	
• min.	0 °C
• max.	50 °C; Vertical installation (horizontal)
Ambient temperature during storage/transportation	
• min.	-20 °C
• max.	60 °C
Relative humidity	
• Operation, max.	95 %; no condensation
Vibrations	
• Vibration load in operation	10 m/s ²
• Vibration load during transport/storage	10 m/s ²
Shock testing	
• Shock load during operation	150 m/s ²
• shock acceleration during storage/transport	150 m/s ²
Mechanics/material	
Enclosure material (front)	
• Aluminum	Yes
Dimensions	
Width of the housing front	415 mm
Height of housing front	310 mm
Mounting cutout, width	396 mm; Tolerance: +1 mm
Mounting cutout, height	291 mm; Tolerance: +1 mm
Overall depth	62.5 mm

Weights	
Weight without packaging	3.9 kg
Weight incl. packaging	5 kg
last modified: 12/16/2020 