

MKAX standard metallic version

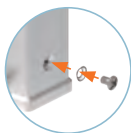
inserts		page:
CK	3 and 4 poles + ⊕	58
CKS	3 and 4 poles + ⊕	-
CKSH	3 and 4 poles + ⊕	63
CD	8 poles	67
CQ4	2 poles + ⊕	182
CQ4 H	2 poles + ⊕	183
CQ4	3 poles + ⊕	184
CQ	5 poles + ⊕	186
CQ	7 poles + ⊕	187
CQ	12 poles + ⊕	189
CQ	21 poles + ⊕	190
CJ KF		223
CJK 8FT		228
CJK 8IFT		228
CLK 04 SC		239
CX 1/2 BD		243
CXL 2/4 SF/SM		250
CXL SF/SM		250
CXL 2/4 PF/PM		251
CXL 2/4 PFH/PMH		251
CXL PF/PM		251

bulkhead mounting housings**STAINLESS STEEL LEVER****description**part No.
(entry M32)M32 fixing thread ¹⁾ (*)**MKAX IF**gasket and screw kit
for IP66/IP67/IP69 ¹⁾**CKR 65**gasket and screw kit for IP66/IP67/IP69 ¹⁾
specific for CD 08 inserts**CKR 65 D**

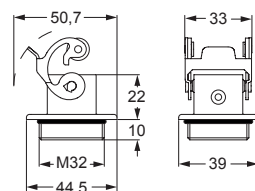
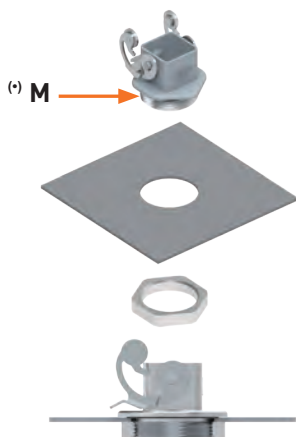
¹⁾ To obtain the IP66/IP67/IP69 degree of protection, a kit with insert fixing screw and gasket can be purchased separately.
Several inserts size "21.21" are already supplied with fixing screw and gasket, which ensures IP66/IP67/IP69 degree of protection. See list below, not including any special version:

- CQF/M 07, CQF/M 12
- CJ KF/M
- CJK 8FT /8IFT /8MT /8IMT, CJK 8M
- CUK 2FT /3FT
- CX 1/2 BDF/M
- CLK 04 SCF /SCF-H /SCM
- CXL 2/4 PF /PM /PFH /PMH /SF /SM, CXL SF/M.

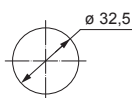
NOTE: Housing type and colour may vary upon specific part No.



^(*) Locknut supplied on request, see Cable glands catalogue (article AS M32N metallic).



panel cut-out for enclosures



cURus
Type 4/4X/12 pending

IP66/IP67/IP69 with CKR 65 (D) ¹⁾