

## Electronic Buzzers Installation 109 / Accessories

### Surface housing 4-fold GY



**Part No.:** 975.109.05

#### MECHANICAL DATA

Length	366 mm
Width	150 mm
Height	55 mm
Materials	PC
Housing colour	Grey
Protection category	IP65
Weight with packaging	759 g
Product weight	759 g

#### APPROVAL DATA

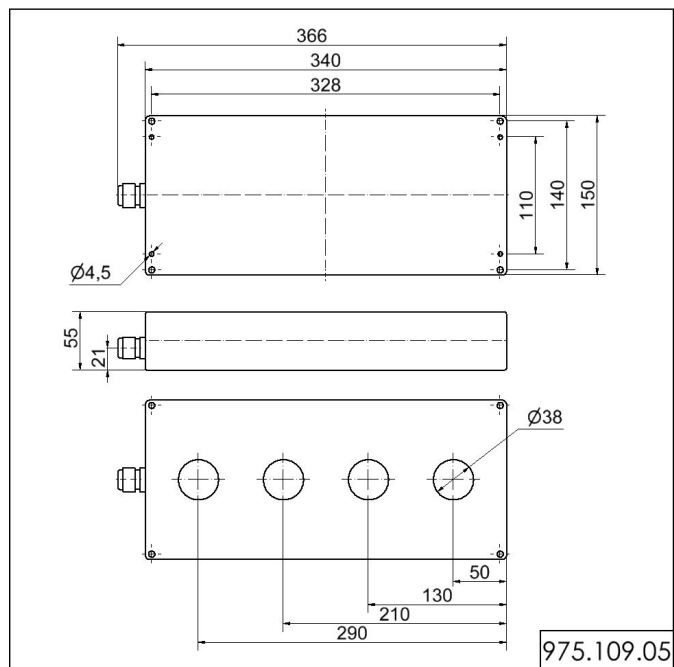
WEEE	No
Conforms with RED directive	No
Conform with ATEX-directive	No
Conforms with CCC	No
Conforms with UL	No
Conforms with FCC	No
Conforms with IC	No
EAC certificate available	No
Conforms with AS-I	No
ICAO Certification	No
Conforms with GL	No
Conforms with RoHS CN	No

**!** For additional installation and mounting information, refer to the appropriate user guide at [www.werma.com](http://www.werma.com). This printed copy is for information only and is subject to alteration.

Electronic Buzzers Installation 109 / Accessories

**Surface housing 4-fold GY**

**DRAWING**



For additional installation and mounting information, refer to the appropriate user guide at [www.werma.com](http://www.werma.com). This printed copy is for information only and is subject to alteration.