

Ex horns and sirens / Ex-Electronic Buzzers Installation 718

Ex Buzzer EM Contin. tone 24VDC GY



Part No.: 718.000.55



MECHANICAL DATA

Height	48 mm
Diameter	43 mm
Materials	PC/ABS
Housing colour	Grey
Protection category	IP30
Connection	Flat plug
Type of fixing	Built-in mounting
Working temperature minimum	0°C
Working temperature maximum	+50°C
Weight with packaging	59 g
Product weight	41 g

ELECTRICAL DATA

Operating voltage	24V
Operating voltage type	DC
Operating voltage tolerance	+/- 10%
Rated operational voltage	24 VDC
Rated operational current	20 mA
Rated inrush current	50 mA
Protection class	Protection class 3
Pollution degree	2

ACUSTICAL DATA

Volume (max) at 1m distance	90,0 dB (A)
Acoustic signal image	Continuous tone
Audio frequency	2400 Hz
Acoustic service life	5,000 h minimum

APPROVAL DATA

Conforms with CE	Yes
WEEE	Yes
Conforms with RED directive	No
Conform with ATEX-directive	Yes
ATEX-guidance	2014/34/EU
Ex approval number	DMT 98 ATEX E005 X
Ex label for gas	II2G Ex ib IIC T4/T5/T6 Gb
Ex label for dust	-
Ex-standard	EN 60079-11:2012 EN IEC 60079-0:2018



For additional installation and mounting information, refer to the appropriate user guide at www.werma.com. This printed copy is for information only and is subject to alteration.

Ex horns and sirens / Ex-Electronic Buzzers Installation 718

Ex Buzzer EM Contin. tone 24VDC GY

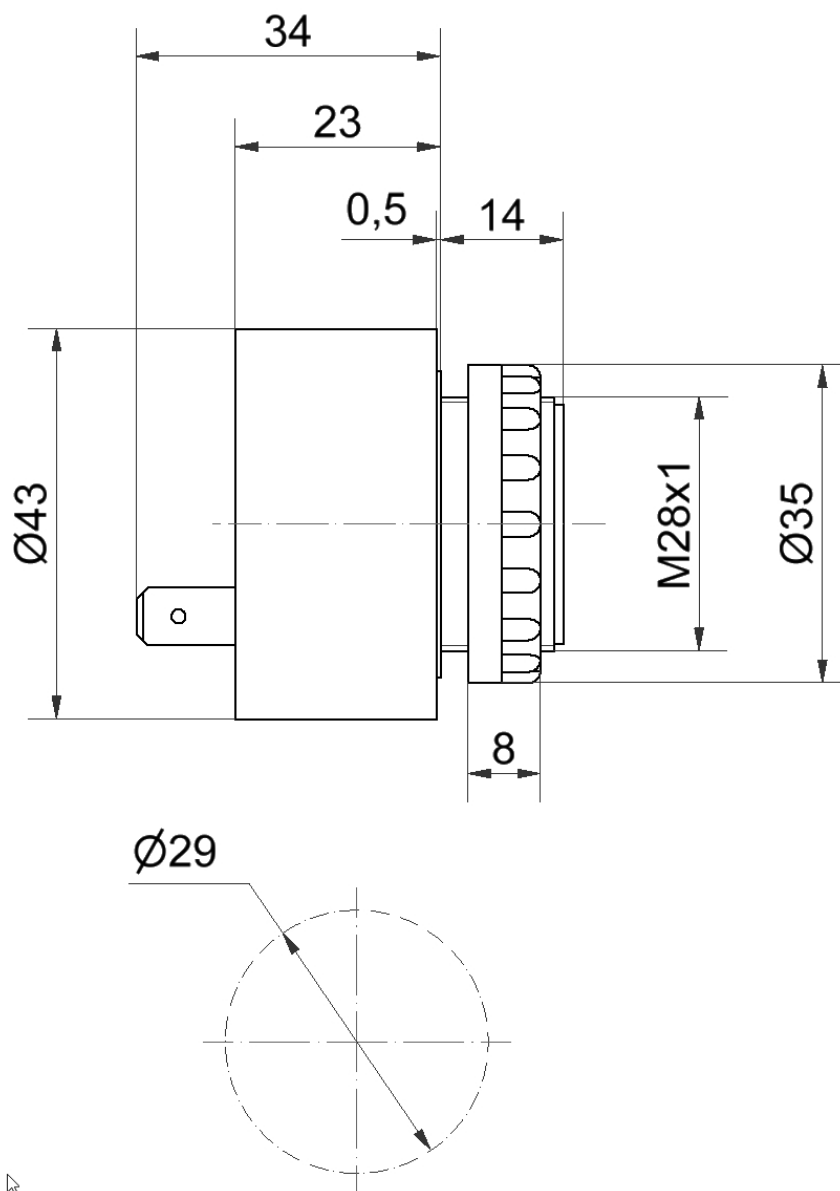
Conforms with IECEx	No
Conforms with CCC-Ex	Yes
CCC-Ex approval number	2020012310348919
Safety information	Observe instruction-leaflet!
Conforms with CCC	Yes
Conforms with UL	No
Conforms with FCC	No
Conforms with IC	No
EAC certificate available	No
Conforms with AS-I	No
ICAO Certification	No
Conforms with GL	No
Conforms with RoHS CN	No
Conforms with VdS	No

! For additional installation and mounting information, refer to the appropriate user guide at www.werma.com. This printed copy is for information only and is subject to alteration.

Ex horns and sirens / Ex-Electronic Buzzers Installation 718

Ex Buzzer EM Contin. tone 24VDC GY

DRAWING



For additional installation and mounting information, refer to the appropriate user guide at www.werma.com. This printed copy is for information only and is subject to alteration.

Ex horns and sirens / Ex-Electronic Buzzers Installation 718

Ex Buzzer EM Contin. tone 24VDC GY**GENERAL**

T-Klasse: T-Class: Classe de Temp. :	Max. Umgebungstemperatur ta: Max. surrounding Temperature ta: Temperature max. d'utilisation ta :		
	+40 °C	+50 °C	+60 °C
T4	Pi =1,3 W	Pi =1,2 W	Pi =1,0 W
T5	Pi =0,82 W	Pi =0,66 W	Pi =0,52 W
T6	Pi =0,6 W	Pi =0,45 W	Pi =0,3 W



For additional installation and mounting information, refer to the appropriate user guide at www.werma.com. This printed copy is for information only and is subject to alteration.