

Mini installation beacon / Beacon Multicolour MC55 RGB Blinking Cable 10-30VDC



Part No.: 240.110.50



MECHANICAL DATA

| | |
|-----------------------------|---------------------|
| Height | 71 mm |
| Diameter | 55 mm |
| Materials | PC PC/ABS |
| Dome colour | Clear |
| Housing colour | Black |
| Protection category | IP65 |
| Connection | Cable |
| Cable length | 1450 mm |
| Tension relief | Pull-out protection |
| Type of fixing | Built-in mounting |
| Working temperature minimum | -20°C |
| Working temperature maximum | +50°C |
| Weight with packaging | 120 g |
| Product weight | 120 g |

ELECTRICAL DATA

| | |
|-----------------------------|--------------------------------|
| Operating voltage | 10-30V |
| Operating voltage type | DC |
| Operating voltage tolerance | +/- 0% |
| Rated operational voltage | 24 VDC |
| Rated operational current | 60 mA |
| Rated inrush current | <700mA |
| Protection class | Protection class 2 |
| Pollution degree | 3 In the connection area: 2 |

OPTICAL DATA

| | |
|----------------------|--------------------|
| Light source | LED |
| Light colour | MC 7 colours |
| Optical signal image | Blink Permanent |
| Blink frequency (Hz) | 1 Hz |
| Service life optical | 50,000 h maximum |

APPROVAL DATA

| | |
|-----------------------------|-----|
| Conforms with CE | Yes |
| WEEE | Yes |
| Conform with ATEX-directive | No |
| Conforms with CCC | No |

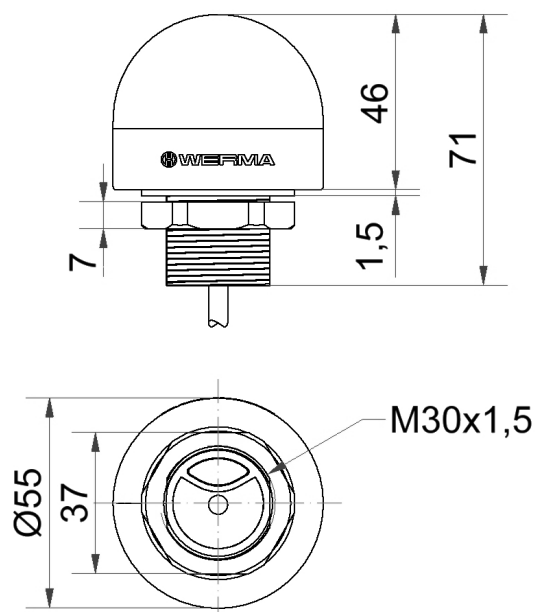


For additional installation and mounting information, refer to the appropriate user guide at www.werma.com. This printed copy is for information only and is subject to alteration.

Mini installation beacon / Beacon Multicolour

MC55 RGB Blinking Cable 10-30VDC

| | |
|-------------------------------|-----------------------|
| Conforms with UL | No |
| Conforms with FCC | No |
| Conforms with IC | No |
| EAC certificate available | Yes |
| Conforms with UKCA (Importer) | Yes (WERMA (UK) Ltd.) |
| Conforms with AS-I | No |
| ICAO Certification | No |
| Conforms with GL | No |
| Conforms with RoHS CN | 25 years |
| Conforms with VdS | No |

DRAWING


For additional installation and mounting information, refer to the appropriate user guide at www.werma.com. This printed copy is for information only and is subject to alteration.