

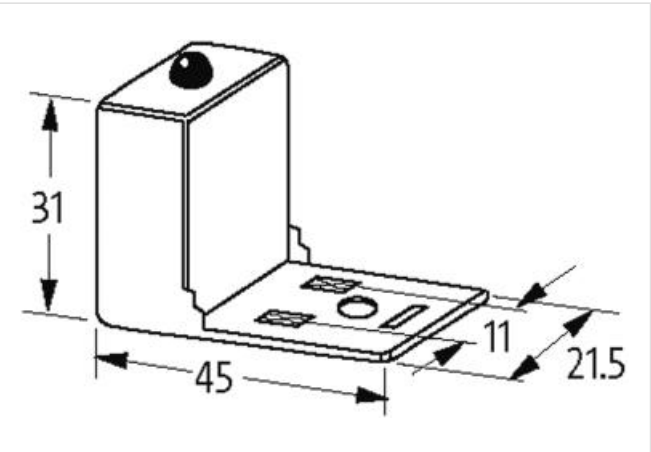
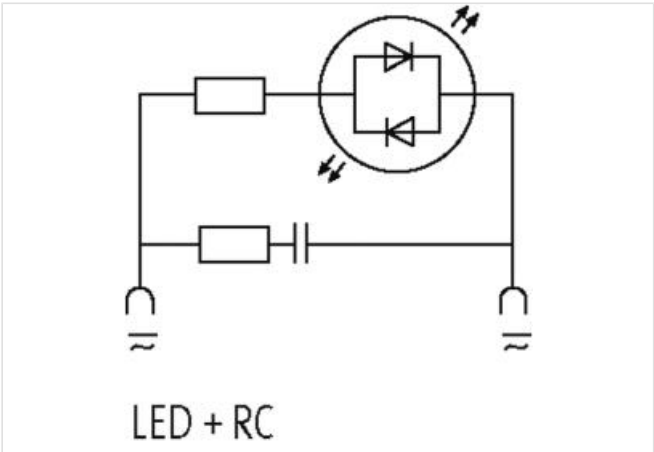
VALVE PLUG SUPPRESSOR FORM BI - 11MM

RC and LED, 24VAC/DC/20VA/W

24 V AC/DC
RC + LED
Remove plug gasket when fitting adapter. Other LED colors on request.
Note PIN arrangement (PE at cable outlet of connector). 180° turned version on request.

Link to Product

Illustration



Product may differ from Image

Technical Data	
Switch off peak	max. 70 V
LED display	(yellow opac)
Input voltage	12...30 V AC/DC
max. power (W)	max. 20 W (VA)
Switch off delay time	max. 20 ms
General data	
Material (contact)	Silvered bronze
Temperature range	-20...+60 °C
Housing	Polyamide black, flame retardant, temperature resistance up to 130 °C
Dimensions H×W×D	31×45×21.5 mm

Product article number of manufacturer 3124269