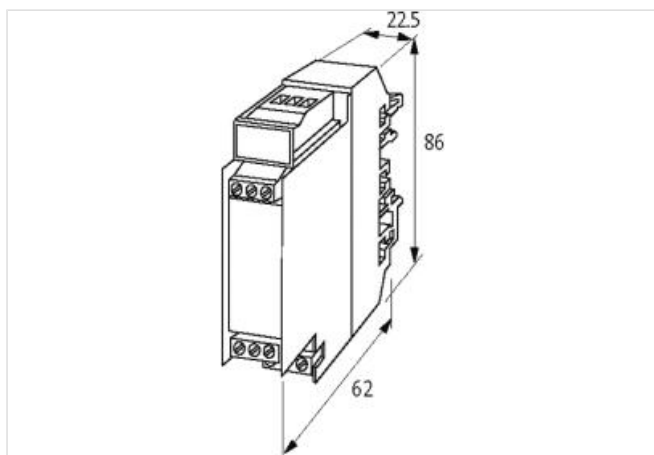
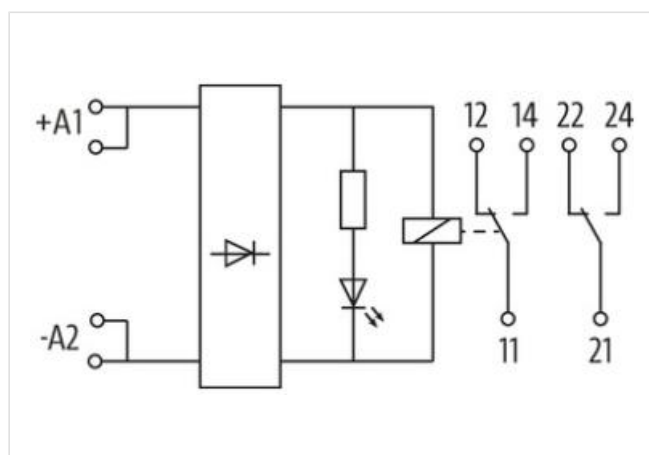


MKS - RA 12/24 VDC OUTPUT RELAY

IN: 24 VDC - OUT: 250 VAC/DC / 8 A

1 relay; 2 NO contacts
8 A
24 V DC
Screw terminals

[Link to Product](#)**Illustration**

Product may differ from Image

General data

Mounting method	DIN-rail mountable TH35 (EN 60715)
Temperature range	-25...+60 °C
Test isolation voltage	5.0 kV
Mech./ elect. life	20 000 000 switching cycles/load dependent
Protection	IP20
Dimensions H×W×D	86×22.5×62 mm

Output

Contact material	Ag Ni
Energize/release/contact bounce time	10/15/1 ms
Switching voltage	max. 250 V AC/DC

The information in this brochure has been compiled with the utmost care.

Liability for the correctness completeness and topicality of the information is restricted to gross negligence. Version: 2022-11-13

Murrelektronik Inc. | 1327 Northbrook Parkway, Suite 460 | Suwanee, GA 30024 | Fon +1 770 497-9292 | Fax +1 770 497-9391 | shop@murrinc.com | shop.murrinc.com

Power rating (voltage dependent)	max. 2000 VA/240 W
----------------------------------	--------------------

Switching current per output	max. 8 A
------------------------------	----------

Input

Connection voltage - current	24 V DC (21.6...26.4 V DC) - 20 mA
------------------------------	------------------------------------

LED display	LED (red)
-------------	-----------

Utilization category

AC-15	3 A (24/110/230 V AC)
-------	-----------------------

AC-1	8 A (24/110/230 V AC)
------	-----------------------

DC-13	1.5 A (24 V DC); 0.3 A (110 V DC); 0.15 A (230 V DC)
-------	--

Product article number of manufacturer	67147
--	-------