

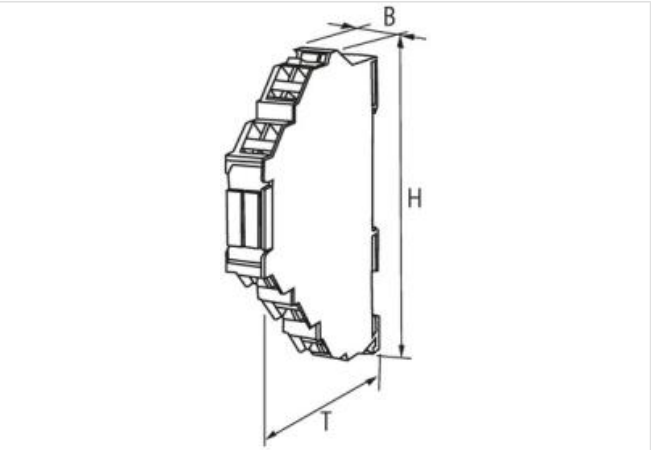
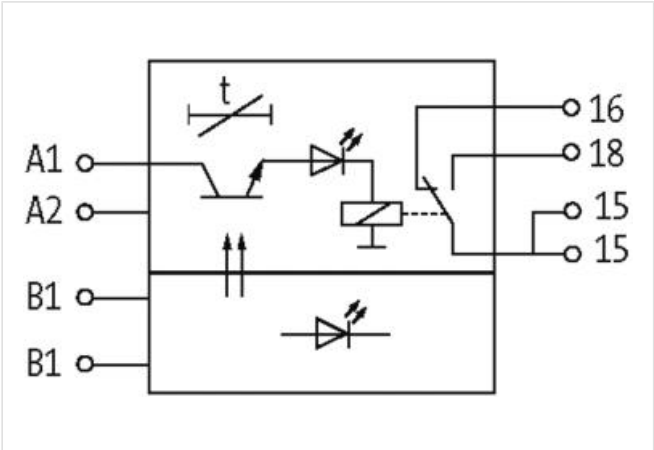
**MIRO 12.4 MULTI-TIMER**

IN: 24 VAC/DC / 230 VAC - OUT: 230 VAC/DC / 6A

Relay output  
Multitimer: 0.1...300  
Spring clamp terminals

[Link to Product](#)

Illustration



Product may differ from Image

General data	
Mounting method	DIN-rail mountable (EN 60715)
Temperature range	-25...+60 °C
Test isolation voltage	4.8 kV
Mech./ elect. life	20 000 000 switching cycles/load dependent
Output	
Output voltage	max. 230 V AC/DC
Min. load current	8 mA (24 V DC)
Output rating	max. 1500 VA/120 W
Contact material	Ag Sn O2
Energize/release/contact bounce time	8/10/2 ms
Output current	max. 6 A

Input	
Input voltage	24 V AC/DC or 230 V AC ( $\pm 15\%$ )
Control voltage	24 V AC/DC or 230 V AC ( $\pm 15\%$ )
Control current	2 mA
Input current	12 mA (24 V DC)
Product article number of manufacturer	6652370