

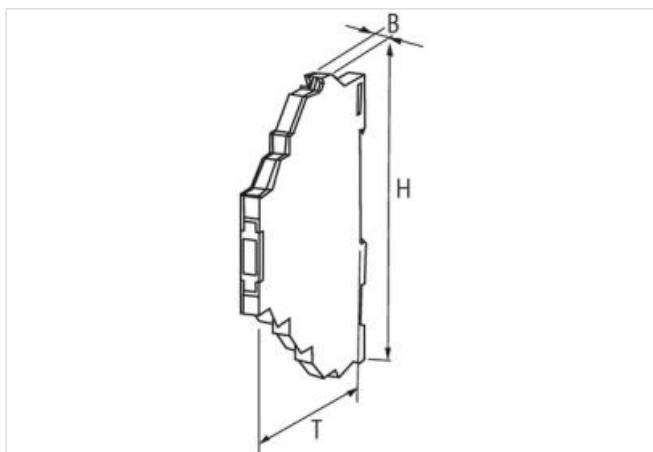
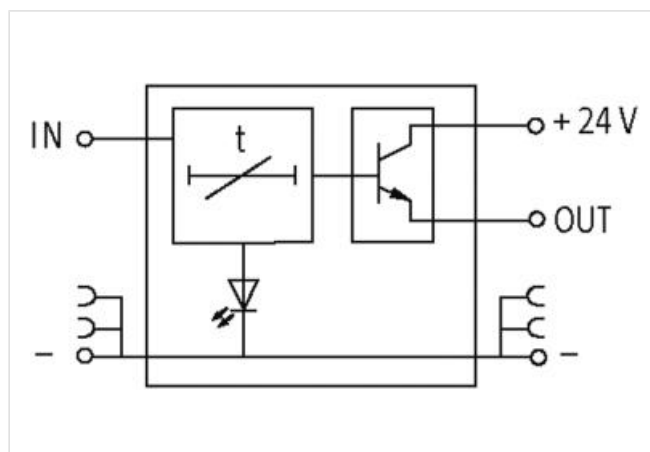
## MIRO IMPULSE EXTENSION MODULES

IN: 24 VDC - OUT: 24 VDC / 0.1 A

Transistor output  
Impulse expansion: 0.1...10 s  
Spring clamp terminals

### [Link to Product](#)

#### Illustration



Product may differ from Image



#### General data

Mounting method	DIN-rail mountable (EN 60715)
Temperature range	0...+60 °C
Test isolation voltage	no galvanic separation
Dimensions HxWxD	91x6.2x70 mm

#### Output

Switching voltage	Operating voltage -1.5 V
-------------------	--------------------------

Switching current per output                      max. 100 mA

Input	
Input voltage	19...29 V DC
Control voltage	16...32 V DC
Impulse length	min. 0.5 ms
Time range	0.1...10 s
Product article number of manufacturer	6652320