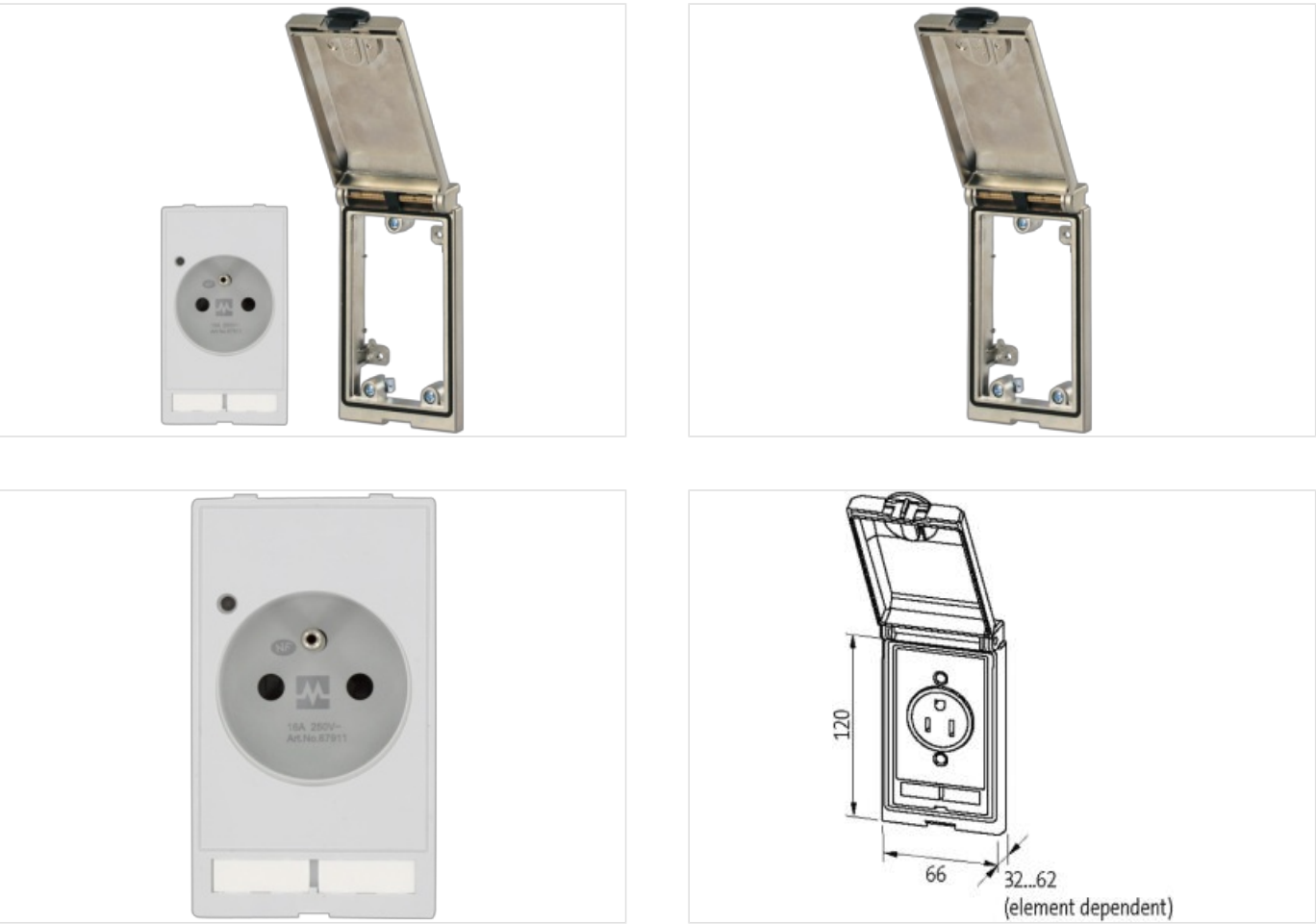


Modlink MSDD-set: Frame 4000-68113-0000000,
insert 4000-68000-0050000

[Link to Product](#)

Illustration



Product may differ from Image

Frame	
suitable for mounting with wall thickness	1...5 mm
Protection	IP65
Temperature range	-10...+60 °C (storage temperature -25...+60 °C)
Housing	Zinc die-casting, with surface finishing
France (UTE-NF)	
Connection	Screw terminals: max. 2× 6 mm² (AWG 10)
Operating current	16 A
LED display	yellow
No. of poles	2 + PE
Operating voltage	250 V AC
Product article number of manufacturer	4000-68113-0050000