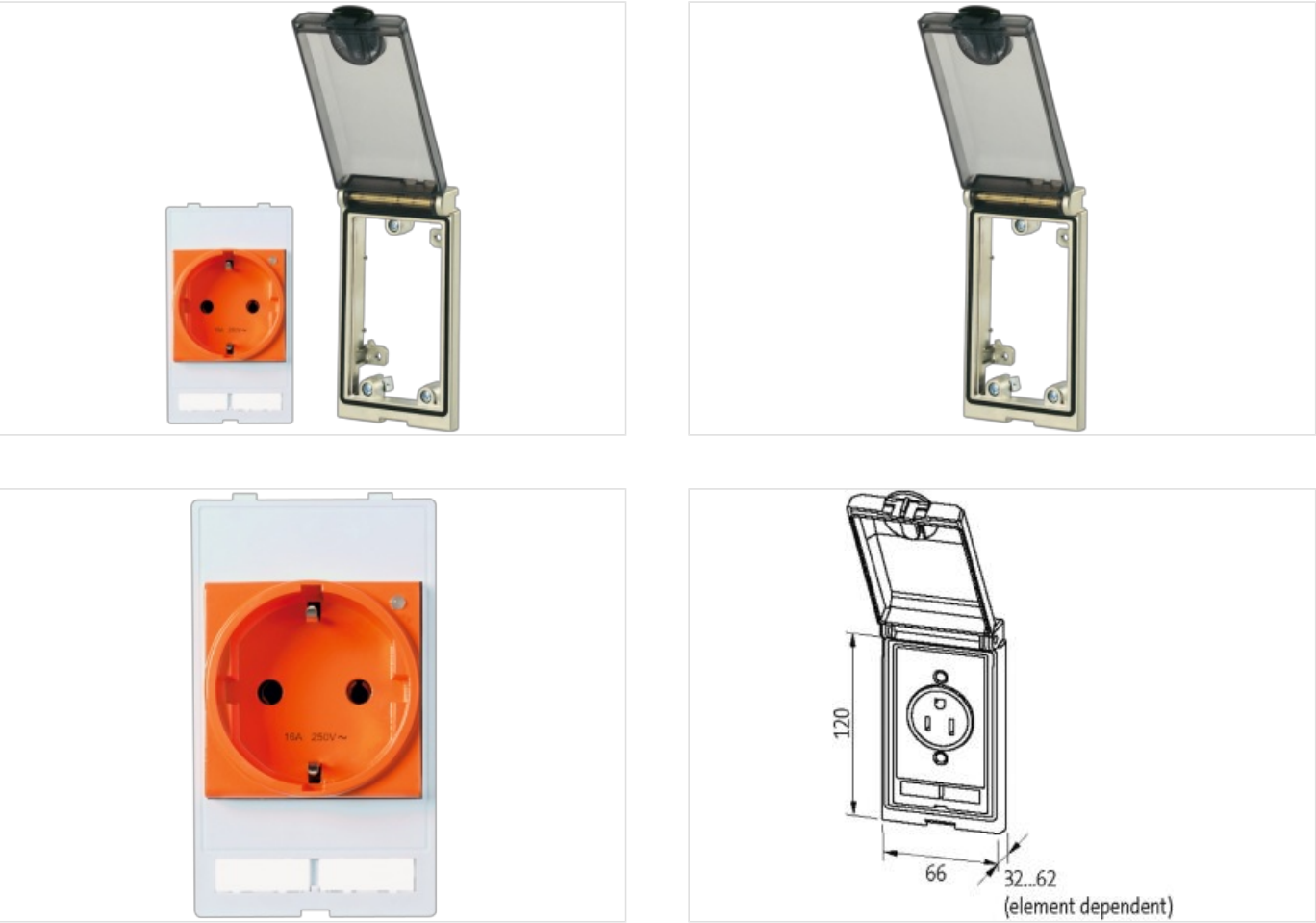


Modlink MSDD-set: Frame 4000-68213-0000000,
insert 4000-68000-0140000

Link to Product

Illustration



Product may differ from Image

Frame	
suitable for mounting with wall thickness	1...5 mm
Protection	IP65
Temperature range	-10...+60 °C (storage temperature -25...+60 °C)
Housing	Frame: zinc die-casting, with surface finishing, Lid: plastic, PC transparent
Germany (VDE)	
Connection	Spring clamp terminals: max. 2× 2.5 mm² (AWG 14)
Operating voltage	250 V AC
No. of poles	2 + PE
Operating current	10...16 A
Product article number of manufacturer	
4000-68213-0140000	