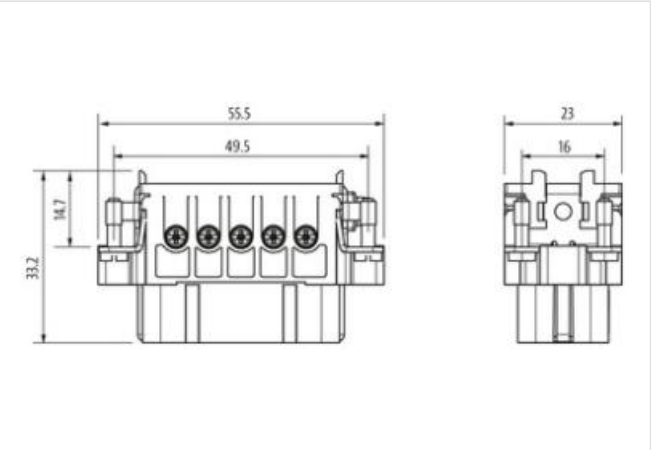
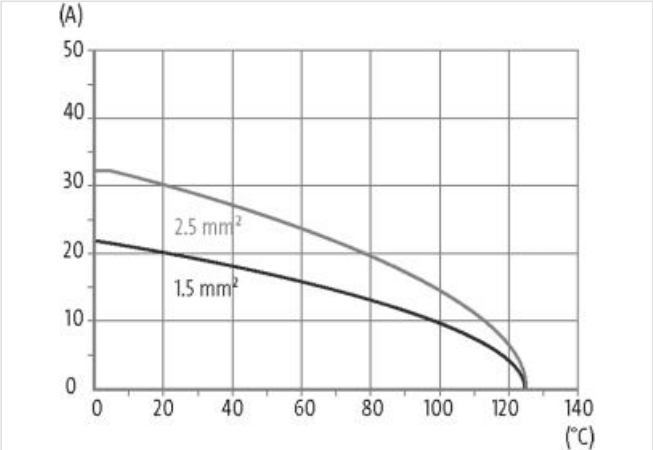
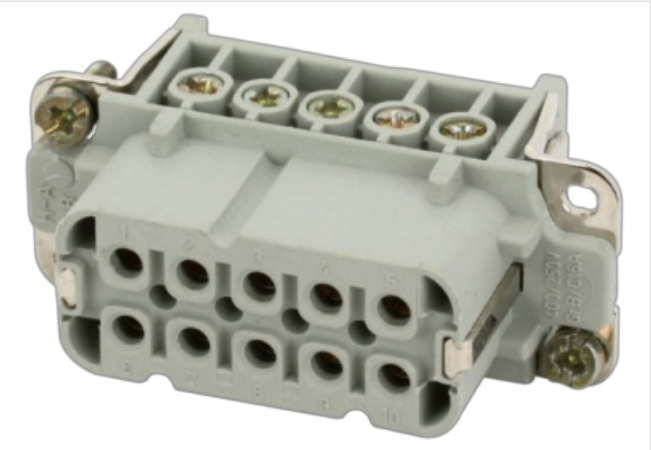


A10 female 10-pole, screw t., 250 V, 16 A

A10  
Female  
10-pole  
Screw terminal  
Technical data will be only guaranteed with Murrelektronik components.

Link to Product

Illustration



Product may differ from Image



Technical Data	
Operating voltage	250 V AC/DC
Rated surge voltage	4.0 kV
Operating current	16 A
No. of poles	10 + PE
Material group	IIIb
Mating cycles	min. 500
Connection	Screw terminal

Connection cross section	0.5...2.5 mm <sup>2</sup> (AWG 20...14)
Pull-out force	min. 50 N
Holding force	> 150 N
Tightening torque (clamp screw)	min. 0.4 Nm
Insertion and withdrawal force	< 180 N
Stripping length	7.8 mm
Isolation resistance	≥ 10 <sup>8</sup> Ω
Contact resistance	≤ 5 mΩ
Over voltage category	III
Wire-Ø incl. isolation	max. 4.6 mm

#### General data

Material (contact)	Brass
Material (contact surface)	Ag
Pollution Degree	3
Temperature range	-40...+125 °C
Material (contact carrier)	PA GF
Flammability class	V-0 (acc. to UL 94)
Size	A10
Type	Female
Climatic category	40/125/21
Dimensions H×W×D	33.2×23×55.5 mm

#### Cables

Current load capacity	see derating curve
Product article number of manufacturer	70MH-EB010-BS01020