

CUBE67 I/O EXTENSION MODULE

4 analog inputs (I)

Expansion module

AI4 - (E) 4× M12 (I)

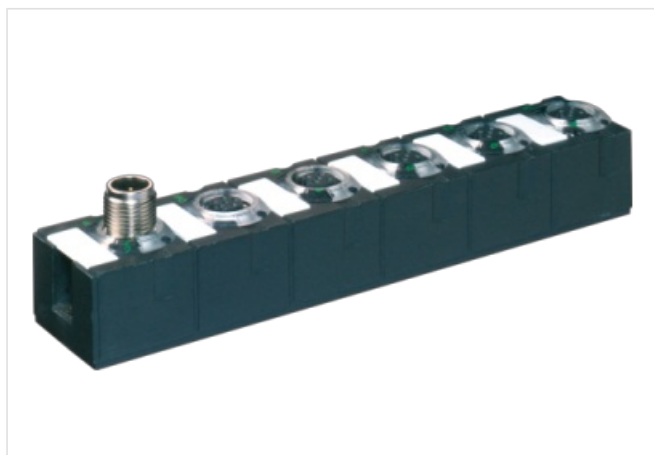
Current

Connection cables are in the online shop under "Connection Technology".

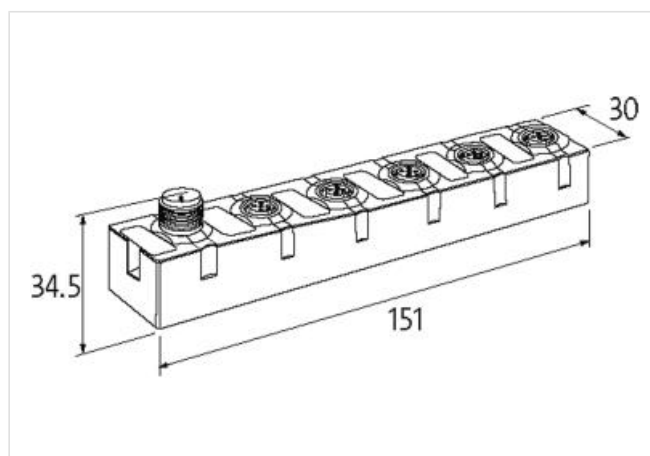
Housing fully potted.

[Link to Product](#)

Illustration



Product may differ from Image



General data

| | |
|-------------------|---|
| Mounting method | 2-hole screw mounting |
| Temperature range | 0...+55 °C (storage temperature -20...+75 °C) |
| Protection | IP67 |
| Dimensions H×W×D | 150×30×34.5 mm |

Input

| | |
|--------------------------|--|
| Sensor supply US | 24 V DC (EN 61131-2), max. 200 mA (M12 female), short-circuit and overload protected |
| Accuracy | max. ±0.5% (of range limit) |
| Conversion time (analog) | approx. 2 ms (per channel) |
| Resolution (analog) | 15 Bit |

Internal communication

| | |
|---------------------|--|
| LED display | US: sensor supply and internal supply voltage (green: OK); UA: actuator supply (green: OK) |
| Current consumption | max. 50 mA |

Connections

| | |
|-------------------------------|--|
| Fieldbus | via internal system connection |
| Sensor-system/actuator supply | via internal system connection (max. 2× 4 A) |
| I/O ports | M12 (female) 5-pole, A-coded |

Product article number of manufacturer 56731

Diagnostic

| | |
|----------------------|-----------------------------|
| Communication status | via LED |
| Diagnostic via LED | per module and channel |
| Diagnostic via BUS | per module and channel |
| Actuator warning | per channel via LED and BUS |

| | |
|---------------------------------------|-----------------------------|
| Monitoring - under voltage | yes |
| Monitoring - no voltage | yes |
| Wire break upper/lower limit overload | per channel via LED and BUS |
| Short-circuit and overload | yes |