

CUBE67 I/O EXTENSION MODULE

32 multifunction channels

Expansion module

DIO32 - 0.5 A (E) - 16× M12

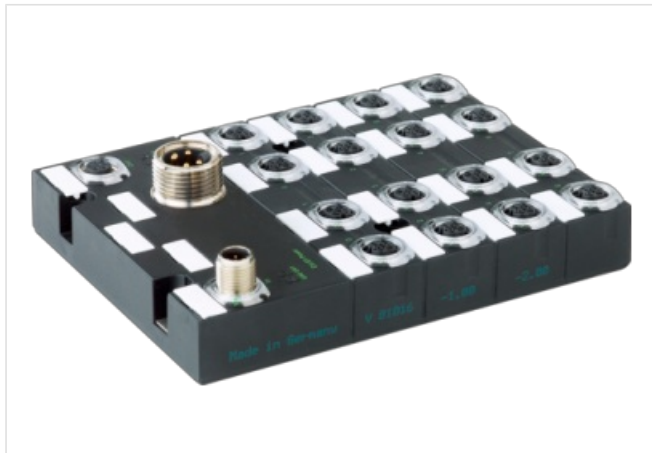
Digital inputs/outputs (multifunctional)

Connection cables are in the online shop under "Connection Technology".

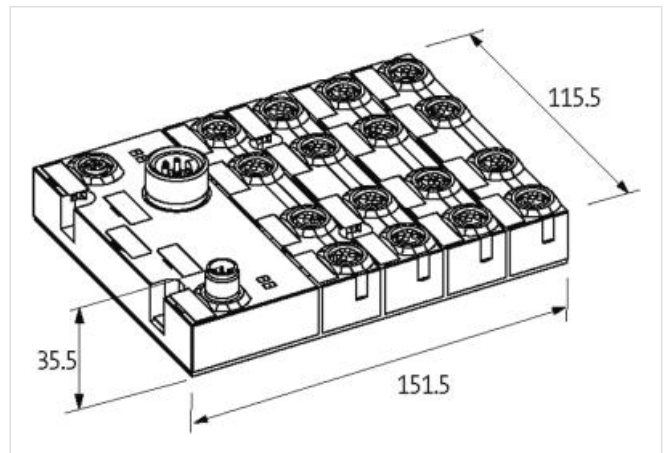
Housing fully potted.

[Link to Product](#)

Illustration



Product may differ from Image



General data

Mounting method	4 hole screw mounting
Temperature range	0...+55 °C (storage temperature -20...+75 °C)
Protection	IP67
Dimensions H×W×D	151.5×115.5×35.5 mm

Output

Actuator supply (8× M12 left side)	24 V DC (EN 61131-2), via 7/8" male (max. 1× 9 A)
Actuator supply (8× M12 right side)	24 V DC (EN 61131-2), via 7/8" male (max. 1× 9 A)
Lamp load (8× M12 right)	10 W
Switching current per output (8× M12 right)	max. 0.5 A (short-circuit and overload protected)
Switching current per output (8× M12 left)	max. 0.5 A (short-circuit and overload protected)
Lamp load (8× M12 left)	10 W

Input

Sensor supply US	24 V DC (EN 61131-2), max. 200 mA (M12 female), short-circuit and overload protected
Type	for 3-wire sensors or mechanical switches, PNP
Input filter	1 ms

Internal communication

LED display	US: sensor supply and internal supply voltage (green: OK); UA: actuator supply (green: OK)
Current consumption	max. 60 mA

Parameterization

PIN 2 (8× M12 right side)	Input/Output/Diagnostic
PIN 2 (8× M12 left side)	Input/Output/Diagnostic
PIN 4 (8× M12 right side)	Input/Output
PIN 4 (8× M12 left side)	Input/Output

The information in this brochure has been compiled with the utmost care.

Liability for the correctness completeness and topicality of the information is restricted to gross negligence. Version: 2022-11-13

Murrelektronik Inc. | 1327 Northbrook Parkway, Suite 460 | Suwanee, GA 30024 | Fon +1 770 497-9292 | Fax +1 770 497-9391 | shop@murrinc.com | shop.murrinc.com

Connections

Fieldbus	via internal system connection
Sensor-system/actuator supply	via internal system connection (max. 2× 4 A)
I/O ports	M12 (female) 5-pole, A-coded

Product article number of manufacturer	56642
--	-------

Diagnostic

Communication status	via LED
Diagnostic via LED	per module and channel
Diagnostic via BUS	per module and channel
Actuator warning	per channel via LED and BUS
Monitoring - under voltage	yes
Monitoring - no voltage	yes
Short-circuit and overload	yes