

MASI68 I/O EXTENSION MODULE

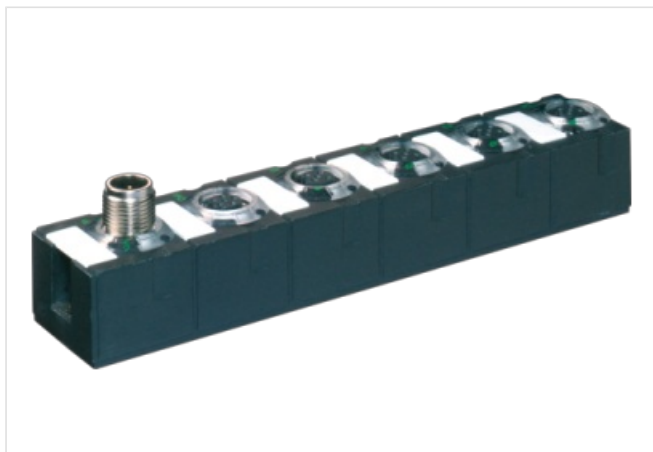
4 digital inputs

Expansion module

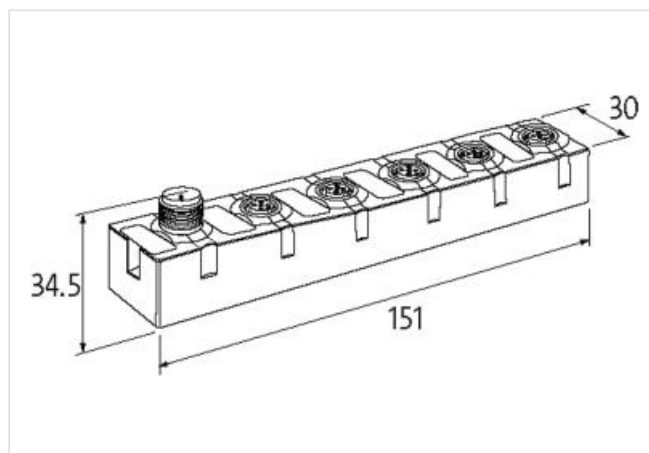
DI4 - 0.2 A (E) - 4× M12 (AB) (Y)

Connection cables are in the online shop under "Connection Technology".

Housing fully potted.

[Link to Product](#)**Illustration**

Product may differ from Image

**Technical Data**

Bus voltage (AS-Interface)	26.5...31.6 V DC
Profile (IO/ID/ID2 code)	S-0.A.2
Addressing	via master or M12 connection and programming device
Address range	1...62 (1...31 A or B)
Total current	max. 250 mA

General data

Mounting method	screw fixing
Temperature range	-20...+60 °C (storage temperature -20...+70 °C)
Protection	IP68
Dimensions H×W×D	151×30×34.5 mm

Input

Sensor supply US	max. 200 mA from AS-Interface (short-circuit and overload protected)
M12 configuration	Y-wiring
Type	for 3-wire sensors or mechanical switches, PNP

Connections

Fieldbus	A-coded
I/O ports	M12, 4-pole

Product article number of manufacturer 56425

Diagnostic

The information in this brochure has been compiled with the utmost care.

Liability for the correctness completeness and topicality of the information is restricted to gross negligence. Version: 2022-11-13

Murrelektronik Inc. | 1327 Northbrook Parkway, Suite 460 | Suwanee, GA 30024 | Fon +1 770 497-9292 | Fax +1 770 497-9391 | shop@murrinc.com | shop.murrinc.com

Communication status	via LED
Diagnostic via LED	per module
Monitoring - no voltage	yes