

MASI68 DI4/0,19A DO4/1A AB E 4xM12

Expansion module

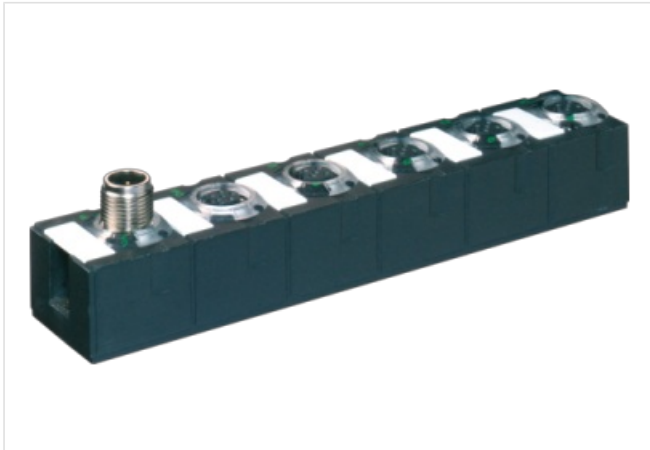
DI4 - 0.19 A DO4 - 1 A (E) - 4× M12 (AB)

AB-Slave

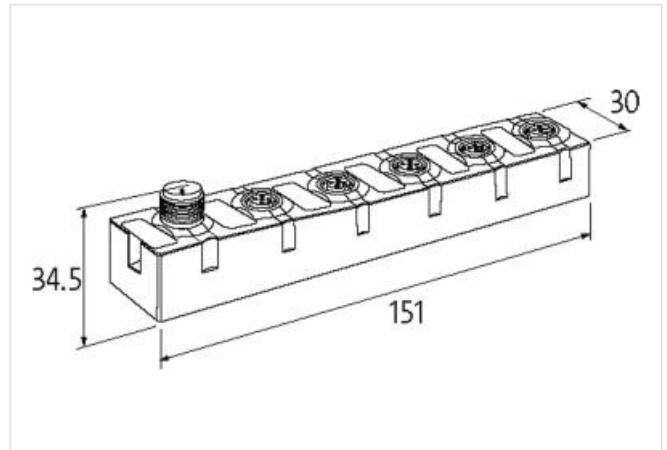
4× M12

Connection cables are in the online shop under "Connection Technology".

Housing fully potted.

[Link to Product](#)**Illustration**

Product may differ from Image

**Technical Data**

Bus voltage (AS-Interface)	26.5...31.6 V DC
Profile (IO/ID/ID2 code)	S-7.A.7
Addressing	via master or M12 connection and programming device
Address range	1...62 (1...31 A or B)
Total current	max. 250 mA

General data

Mounting method	screw fixing
Temperature range	-20...+60 °C (storage temperature -20...+70 °C)
Protection	IP68
Dimensions H×W×D	151×30×34.5 mm

Output

Supply voltage	24 V DC external (18...30.2 V DC) EN 61131-2
Total current	max. 4 A
Switching current per output	max. 1 A (short-circuit and overload protected)

Input

Sensor supply US	max. 190 mA from AS-Interface (short-circuit and overload protected)
Type	for 3-wire sensors or mechanical switches, PNP

Connections

Fieldbus	A-coded
----------	---------

I/O ports	M12, 4-pole
-----------	-------------

Product article number of manufacturer	56439
--	-------

Diagnostic

Diagnostic via LED	per module
--------------------	------------

Monitoring - no voltage	yes
-------------------------	-----