

MASI20 I/O MODULE RELAY

4 digital inputs, 4 digital relay outputs

Digital inputs/relay outputs

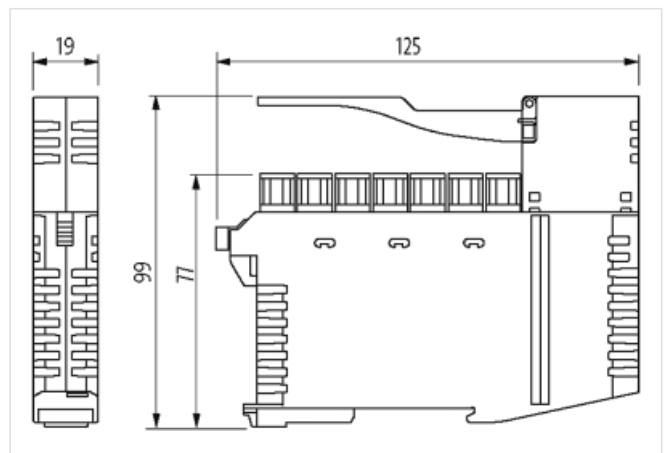
DI4 - 0.15 A DO4R - 2 A (AB)

AB-Slave

Protection IP20

Current manuals can be downloaded at: www.murrelektronik.com**[Link to Product](#)****Illustration**

Product may differ from Image

**Technical Data**

Total current (AS-Interface)	max. 230 mA
Bus voltage (AS-Interface)	26.5...31.6 V DC
Profile (IO/ID/ID2 code)	S-7.A.7
Addressing	via built-in address port or master
Address range	1...62 (1...31 A or B) via address port

General data

Mounting method	DIN-rail mountable (EN 60715)
Temperature range	-25...+70 °C (storage temperature -25...+85 °C)
Protection	IP20
Connection	Push-In spring clamp terminals, 0.2...2.5 mm ² (0.25...1.5 mm ²)
Dimensions H×W×D	125×19×99 mm

Output

Supply voltage	250 V AC/30 V DC
Total current	max. 8 A
Switching current per output	2 A

Input

Sensor supply US	max. 150 mA externally or from AS Interface (short-circuit and overload protected)
Supply voltage	alternatively (switchable) from AS-Interface or from 24 V DC (EN 61131-2) by additional supply
Type	for 3-wire sensors or mechanical switches, PNP

The information in this brochure has been compiled with the utmost care.

Liability for the correctness completeness and topicality of the information is restricted to gross negligence. Version: 2022-11-13

Murrelektronik Inc. | 1327 Northbrook Parkway, Suite 460 | Suwanee, GA 30024 | Fon +1 770 497-9292 | Fax +1 770 497-9391 | shop@murrinc.com | shop.murrinc.com

Input current	max. 5.6 mA
---------------	-------------

Product article number of manufacturer	56478
--	-------

Diagnostic

Communication status	via LED
----------------------	---------

Diagnostic via LED	per module
--------------------	------------

Monitoring - no voltage	yes
-------------------------	-----