



GV Series High Flow Poppet Valves

Toggle, Stem & Cartridge Styles



- Will accept a variety of manual, air pilot, electrical or mechanical actuators
- Small, compact size, lightweight
- Design flexibility and fast response
- Electroless nickel plated brass and anodized aluminum construction for long life and corrosion resistance
- Stainless steel stems and springs for corrosion resistance
- Optional Corrosion-Resistant Series also available that incorporates ENP brass replacing the anodized aluminum to provide enhanced protection for valves used with mildly corrosive media such as moisture in air or gases. Add "CR-" to the beginning of each part number.

Clippard is known as the pioneer of miniature pneumatic products. The MAV series poppet valves were introduced in 1958 and were known for their bubble tight design with large flow for their small #10-32 threaded ports.

Clippard's GV series valves offer the same characteristics of its original line with flow 10 times more than the MAV series and 2.5 times the flow of the MJV series. These 2-way and 3-way valves are offered in 1/4" NPT and 3/8" push-quick ports along with a cartridge mounted version. With Clippard's versatile 15/32-32 nose thread, a large variety of buttons and valve actuators can be used with the GV stem operated valves. The GTV series are toggle valves with panel mounting capabilities (5/8-32 nose thread). The outlet port on all GV valves can be easily positioned to any orientation for mounting convenience.

Medium: 2-Way: Air, Water or Oil; 3-Way: Air

Input Pressure: 150 psig max.

Air Flow: 38 scfm @ 50 psig; 67 scfm @ 100 psig

Temperature Range: 32 to 230°F (0 to 110°C)

Ports: 1/4" NPT, 3/8" Push-Quick, Cartridge

Force for Full Stem Travel: 2 lbs. nominal, 9 lbs. @ 100 psig

Stem Travel: 1/8"

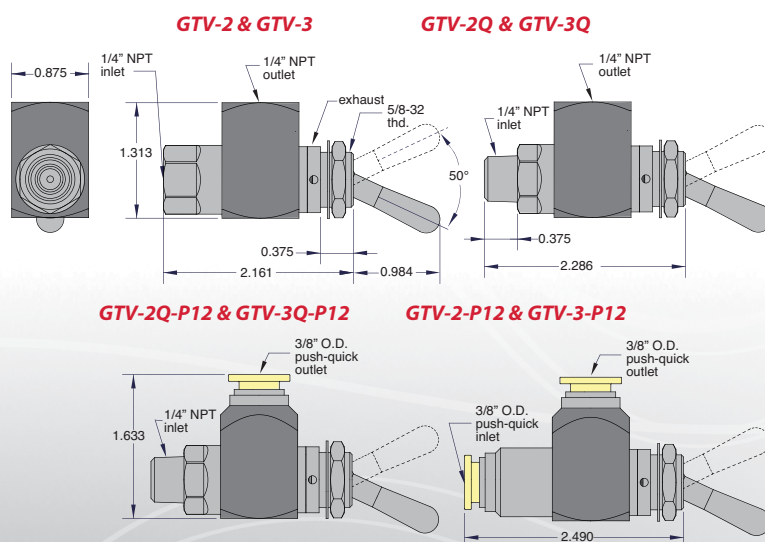
Mounting (Cartridge Style): Inserts into a 0.687" bore

Stem: Stainless Steel

Toggle: Electroless Nickel-Plated Steel

Force to Rotate Toggle: 2 lbs. nominal, 7 lbs. @ 100 psig

Seals: Nitrile, FKM optional



Order Information

Part No.	Description
GTV-2	2-Way Toggle Valve, 1/4" NPT Female
GTV-2Q	2-Way Toggle Valve, 1/4" NPT Male
GTV-2Q-P12	2-Way Toggle Valve, 1/4" NPT, 3/8" PQ Fitting
GTV-2-P12	2-Way Toggle Valve, 3/8" Push-Quick Fittings
GTV-3	3-Way Toggle Valve, 1/4" NPT Female
GTV-3Q	3-Way Toggle Valve, 1/4" NPT Male
GTV-3Q-P12	3-Way Toggle Valve, 1/4" NPT, 3/8" PQ Fitting
GTV-3-P12	3-Way Toggle Valve, 3/8" Push-Quick Fittings

For optional Corrosion-Resistant Series, add "CR-" to the beginning of each part number

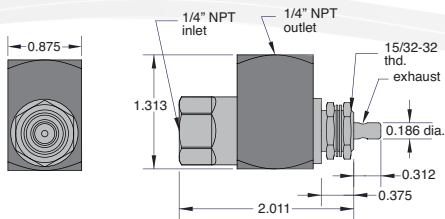
Clippard Instrument Laboratory, Inc.

7390 Colerain Avenue • Cincinnati, OH 45239 • 513-521-4261 • 877-245-6247 • Fax 513-521-4464 • www.clippard.com

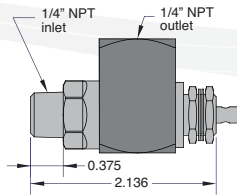
Technical Data Bulletin 7.2.13

Stem & Cartridge Styles

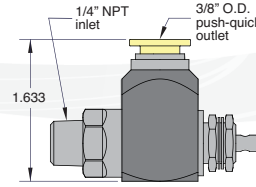
GV-2 & GV-3



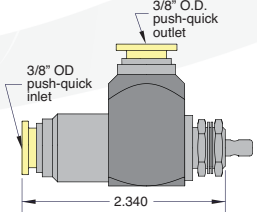
GV-2Q & GV-3Q



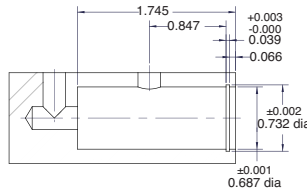
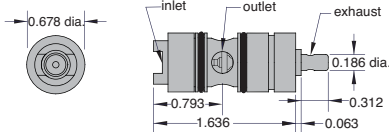
GV-2Q-P12 & GV-3Q-P12



GV-2-P12 & GV-3-P12



GV-2C & GV-3C



Order Information

Part No.	Description	Part No.	Description
GV-2C	2-Way Stem Cartridge Valve	GV-3C	3-Way Stem Cartridge Valve
GV-2	2-Way Stem Valve, 1/4" NPT Female	GV-3	3-Way Stem Valve, 1/4" NPT Female
GV-2Q	2-Way Stem Valve, 1/4" NPT Male	GV-3Q	3-Way Stem Valve, 1/4" NPT Male
GV-2Q-P12	2-Way Stem Valve, 1/4" NPT, 3/8" Push-Quick Fitting	GV-3Q-P12	3-Way Stem Valve, 1/4" NPT, 3/8" Push-Quick Fitting
GV-2-P12	2-Way Stem Valve, 3/8" Push-Quick Fittings	GV-3-P12	3-Way Stem Valve, 3/8" Push-Quick Fittings

For optional Corrosion-Resistant Series, add "CR-" to the beginning of each part number



Single-Acting, Spring Return Air Pilot Actuators

Clippard's MPA Series are ideal actuators for the GV valves offering numerous threads, bore sizes and force factors.

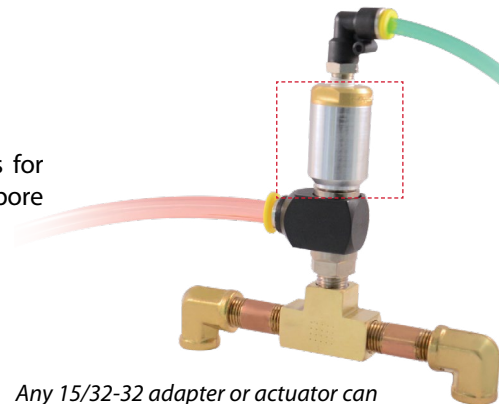
- Input Pressure: 250 psig
- Constructed of brass, stainless steel, nitrile rubber and Acetal
- Mounting via 15/32-32 female thread

Order Information

Part No.	Thread	Bore Size	Min. Pilot Pressure*
MPA-3	#10-32	0.375"	100 psig
MPA-3P	1/8" NPT	0.375"	100 psig
MPA-5	#10-32	0.625"	40 psig
MPA-5P	1/8" NPT	0.625"	40 psig
MPA-7	1/8" NPT	0.875"	25 psig
MPA-10P	#10-32	1.250"	15 psig

* with 100 psig to valve inlet

Professionally Distributed by:



Any 15/32-32 adapter or actuator can be used on all stem-operated GV Series valves

Clippard Instrument Laboratory, Inc.

7390 Colerain Avenue • Cincinnati, OH 45239 • 513-521-4261 • 877-245-6247 • Fax 513-521-4464 • www.clippard.com

Technical Data Bulletin 7.2.13