



# **SOFT-START EEZ-ON® VALVES**

## **27 SERIES**

---

### **PRODUCT CATALOG**








# Soft-Start EEZ-ON® Valves 27 Series

## Product Overview

### Soft-Start

The EEZ-ON® valve is designed to allow a gradual buildup of downstream air pressure before opening to full air flow.

2/2 Valves	3/2 Valves			
Internal Pressure Controlled	Solenoid Pilot Controlled		Internal Pressure Controlled	
				

This gradual pressure buildup allows cylinders and other work elements to move slowly and more safely into their normal working positions before full line pressure is applied.

The 3/2 valves have an exhaust port so that downstream air is exhausted when the valve is de-energized. At the same time, supply air is positively shut off so that a separate shut-off valve is not required.





## VALVE FEATURES

Poppet Design	Dirt tolerant, wear compensating for quick response and high flow capacity
Soft-Start Function	Gradual re-application of pneumatic pressure prevents rapid equipment movement at startup
Pressure Buildup Control	An adjustable restriction within the EEZ-ON® valve determines the rate of downstream pressure buildup, and consequently the time delay for the full opening of the EEZ-ON® valve
Quick Energy Dump	Full size exhaust ports (equal to or larger than supply) provide rapid exhaust of downstream air and are threaded for silencers or remote exhaust lines
Manual Override	Flush flexible, non-locking manual overrides are standard on single solenoid models

**NOTE:** Per specifications and regulations, these products are defined as energy isolation devices, NOT AS EMERGENCY STOP DEVICES.

# Specifications

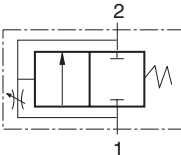
STANDARD SPECIFICATIONS				
GENERAL	Function		2/2 and 3/2 Valve	
	Construction Design		Poppet	
	Actuation		Electrical – Solenoid Pilot Controlled	
			Pneumatic – Pressure Controlled	
	Mounting	Type	Inline	
		Orientation	Any, preferably vertical	
	Connection		Threaded; G, NPT	
Minimum Operation Frequency		Once per month, to ensure proper function		
OPERATING CONDITIONS	Temperature	Solenoid Pilot Controlled	Ambient	40° to 120°F (4° to 50°C)
			Media	40° to 175°F (4° to 80°C)
		Internal Pressure Controlled	Ambient	40° to 175°F (4° to 80°C)
			Media	
	Flow Media			Filtered air
	Operating Pressure			15 to 150 psig (1 to 10 bar)
	External Pilot Supply (Solenoid Pilot Controlled only)			Must be equal to or greater than inlet pressure
ELECTRICAL DATA FOR SOLENOID PILOT VALVES	Solenoids	Operating Voltage		Power Consumption (each solenoid)
		24 volts DC		14 watts
		110-120 volts AC, 50/60 Hz 230 volts AC, 50/60 Hz		87 VA inrush, 30 VA holding
		Rated for continuous duty		
CONSTRUCTION MATERIAL	Valve Body		Cast Aluminum	
	Poppet		Acetal and Stainless Steel	
	Seals		Buna-N	
SAFETY DATA	Safety Integrity Level (SIL)	Certified by TÜV Rheinland in accordance to IEC 61508 and IEC 61511 safety integrity level 2 (SIL 2) and EN ISO 13849-1, PL c (with application specific diagnosis) in singular application with HFT = 0 and SIL 3 and PL e in redundant application with HFT≥1, for details see certificate.		
IMPORTANT NOTE: Please read carefully and thoroughly all of the CAUTIONS, WARNINGS on the inside back cover.				

PRODUCT CREDENTIALS				
Safety Category	EAC Declaration of Conformity	ISO Standard	CSA Certificate of Compliance	Canadian Registration Number (CRN)
 		ISO 13849-1:2015	 Solenoid Pilot Valves	Available for appropriately tested valves

# Ordering Information

INTERNAL PRESSURE CONTROLLED		2-Way 2-Position Valves	
Port Size	Body Size	Valve Model Number	
In-Out		G Thread	NPT Thread
1/4	3/8	D2781A2007	2781A2007
3/8	3/8	D2781A3007	2781A3007
1/2	3/8	D2781A4017	2781A4017
	3/4	D2781A4007	2781A4007
3/4	3/4	D2781A5007	2781A5007
1	3/4	D2781A6017	2781A6017
	1-1/4	D2781A6007	2781A6007
1-1/4	1-1/4	D2781A7007	2781A7007
1-1/2	1-1/4	D2781A8017	2781A8017

Port Size	Body Size	Flow C <sub>v</sub>	Weight lb (kg)
1, 2		1-2	
1/4	3/8	2.3	1.5 (0.7)
3/8	3/8	3.8	
1/2	3/8	4.0	
	3/4	13	2.3 (1.0)
3/4	3/4	15	
1	3/4	16	
	1-1/4	24	6.0 (2.7)
1-1/4	1-1/4	29	
1-1/2	1-1/4	29	

Valve Schematic	
	

## SOLENOID PILOT CONTROLLED

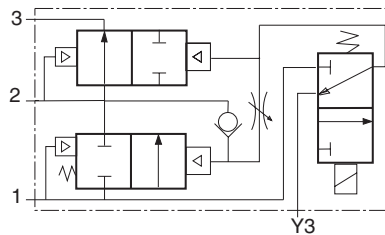
## 3-Way 2-Position Valves

Port Size		Body Size	Valve Model Number					
In-Out	Exhaust		G Thread			NPT Thread		
			24 V DC	110-120 V AC	230 V AC	24 V DC	110-120 V AC	230 V AC
1/4	1/2	3/8	D2773B2037W	D2773B2037Z	D2773B2037Y	2773B2037W	2773B2037Z	2773B2037Y
3/8	1/2	3/8	D2773B3037W	D2773B3037Z	D2773B3037Y	2773B3037W	2773B3037Z	2773B3037Y
1/2	1/2	3/8	D2773B4047W	D2773B4047Z	D2773B4047Y	2773B4047W	2773B4047Z	2773B4047Y
	1	3/4	D2773B4037W	D2773B4037Z	D2773B4037Y	2773B4037W	2773B4037Z	2773B4037Y
3/4	1	3/4	D2773B5037W	D2773B5037Z	D2773B5037Y	2773B5037W	2773B5037Z	2773B5037Y
1	1	3/4	D2773B6047W	D2773B6047Z	D2773B6047Y	2773B6047W	2773B6047Z	2773B6047Y
	1-1/2	1-1/4	D2773A6037W	D2773A6037Z	D2773A6037Y	2773A6037W	2773A6037Z	2773A6037Y
1-1/4	1-1/2	1-1/4	D2773A7037W	D2773A7037Z	D2773A7037Y	2773A7037W	2773A7037Z	2773A7037Y
1-1/2	1-1/2	1-1/4	D2773A8047W	D2773A8047Z	D2773A8047Y	2773A8047W	2773A8047Z	2773A8047Y

For other voltages, consult ROSS.

Port Size		Body Size	Flow C <sub>v</sub>		Weight lb (kg)
1, 2	3		1-2	2-3	
1/4	1/2	3/8	2.5	3.1	4.5 (2.0)
3/8	1/2	3/8	3.6	5.3	
1/2	1/2	3/8	3.3	5.3	
	1	3/4	10	13	5.0 (2.3)
3/4	1	3/4	12	15	
1	1	3/4	12	16	
	1-1/2	1-1/4	23	34	8.8 (4.0)
1-1/4	1-1/2	1-1/4	30	32	
1-1/2	1-1/2	1-1/4	30	31	

### Valve Schematic



# Ordering Information

INTERNAL PRESSURE CONTROLLED				3-Way 2-Position Valves	
Port Size		Body Size	Valve Model Number		
In-Out	Exhaust		G Thread	NPT Thread	
1/4	1/2	3/8	D2783C2037	2783C2037	
3/8	1/2	3/8	D2783C3037	2783C3037	
1/2	1/2	3/8	D2783C4047	2783C4047	
	1	3/4	D2783C4037	2783C4037	
3/4	1	3/4	D2783C5037	2783C5037	
1	1	3/4	D2783C6047	2783C6047	
	1-1/2	1-1/4	D2783B6037	2783B6037	
1-1/4	1-1/2	1-1/4	D2783B7037	2783B7037	
1-1/2	1-1/2	1-1/4	D2783B8047	2783B8047	

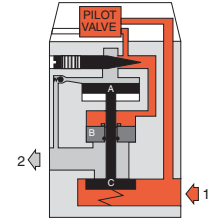
Port Size		Body Size	Flow C <sub>v</sub>		Weight lb (kg)
1, 2	3		1-2	2-3	
1/4	1/2	3/8	2.5	3.1	4.5 (2.0)
3/8	1/2	3/8	3.6	5.3	
1/2	1/2	3/8	3.3	5.3	
	1	3/4	10	13	5.0 (2.3)
3/4	1	3/4	12	15	
1	1	3/4	12	16	
	1-1/2	1-1/4	23	34	8.8 (4.0)
1-1/4	1-1/2	1-1/4	30	32	
1-1/2	1-1/2	1-1/4	30	31	

Valve Schematic

## Solenoid Pilot Controlled Valves

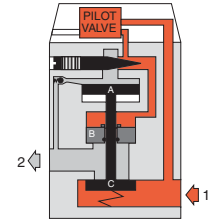
### Pilot Not Energized

Pilot air is blocked by the pilot. Any downstream pressure forces piston B (which slides on the valve stem) upward. This opens the exhaust port and vents the downstream line.



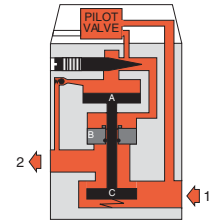
### Pilot Energized

Pilot air forces piston B downward to close the exhaust port. Pilot air also flows past the adjusting needle, opens the ball check and begins slowly to pressurize the outlet line. At the same time, pressure is building up on piston A.



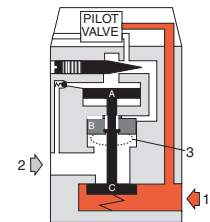
### Full Pressure

When the pressure on piston A reaches approximately 50 percent of inlet pressure, it is forced downward and opens inlet poppet C. Full inlet pressure now flows freely to the outlet port.



### Pilot De-energized

Air above pistons A and B is exhausted through the exhaust port of the pilot valve. Air above poppet C forces sliding piston B upward so that the main exhaust port is opened and the pressurized air is exhausted.

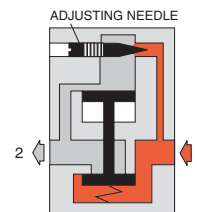


# Valve Operation

## Internal Pressure Controlled Valves

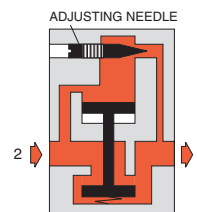
### Air Pressure to Inlet

When air pressure is first applied to the inlet, air flow to the piston is restricted by the adjustable needle in the delay orifice. Downstream air pressure gradually builds up at a rate determined by the setting of the adjustable needle.



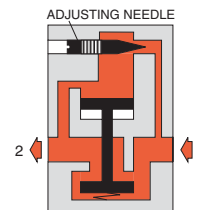
### Inlet Pressure Removed

When inlet pressure is removed, the exhausting downstream air pressure keeps the inlet poppet open until the downstream pressure drops by approximately 90 percent. The remaining pressure is exhausted via the delay orifice.



### Valve Opens to Full Flow

When downstream air pressure reaches approximately 40 to 60 percent of inlet pressure, the valve element shifts to the full open position and there is full air flow to the downstream components. This condition continues as long as inlet air pressure is present.



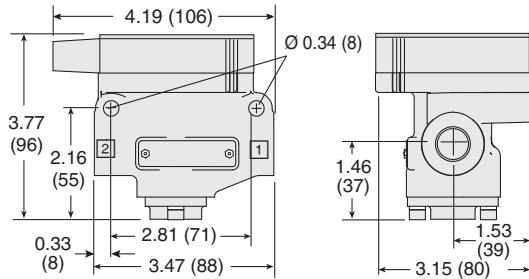


## 2/2 Pressure Controlled Valves

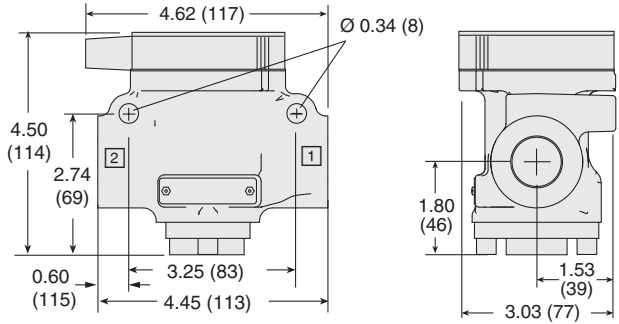
### DIMENSIONS

Inches (mm)

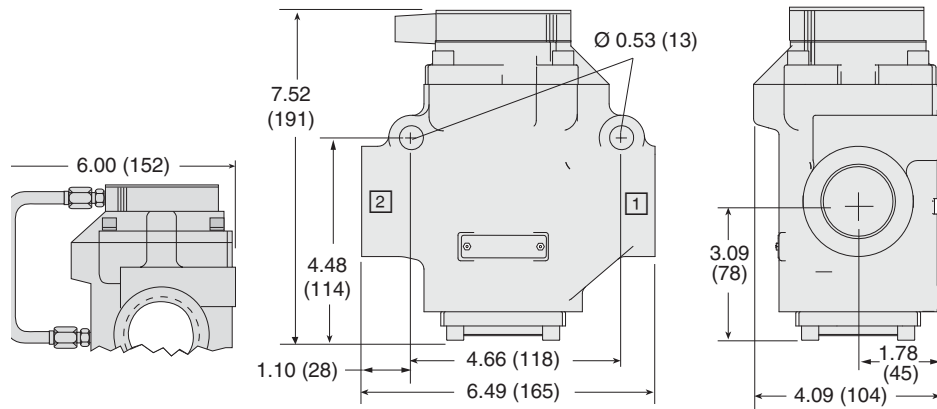
Body Size 3/8



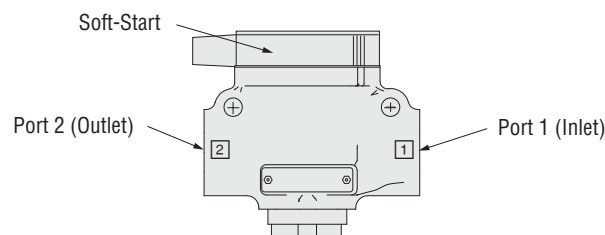
Body Size 3/4



Body Size 1-1/4

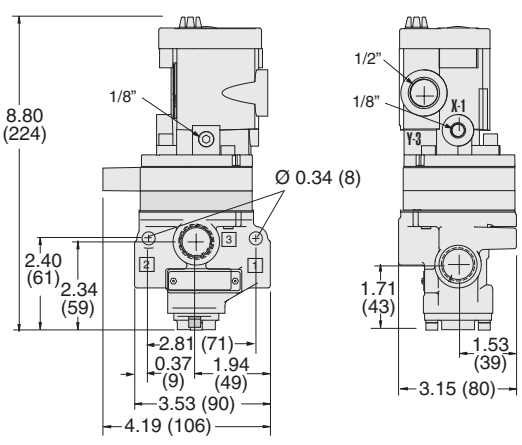
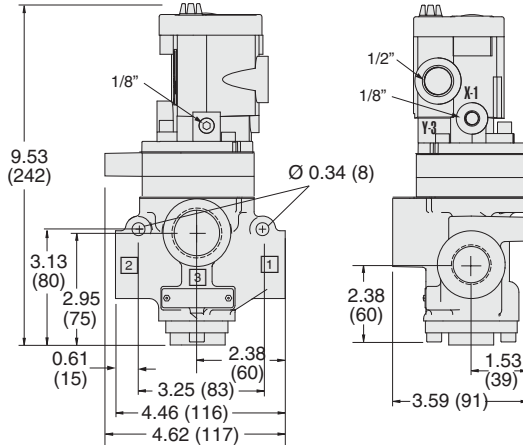
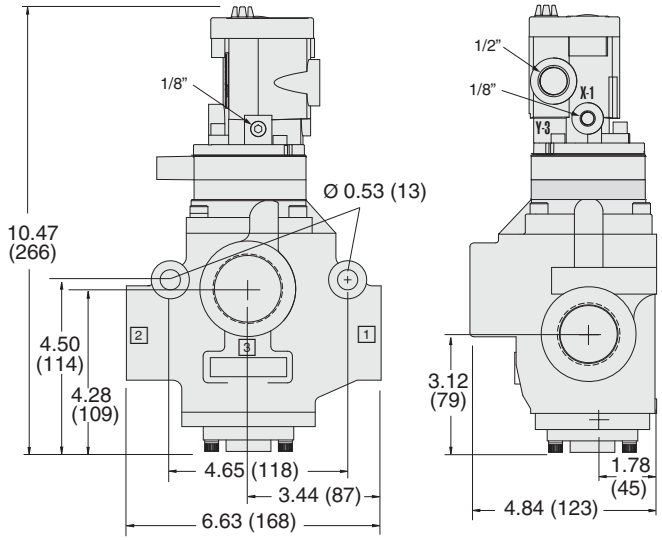


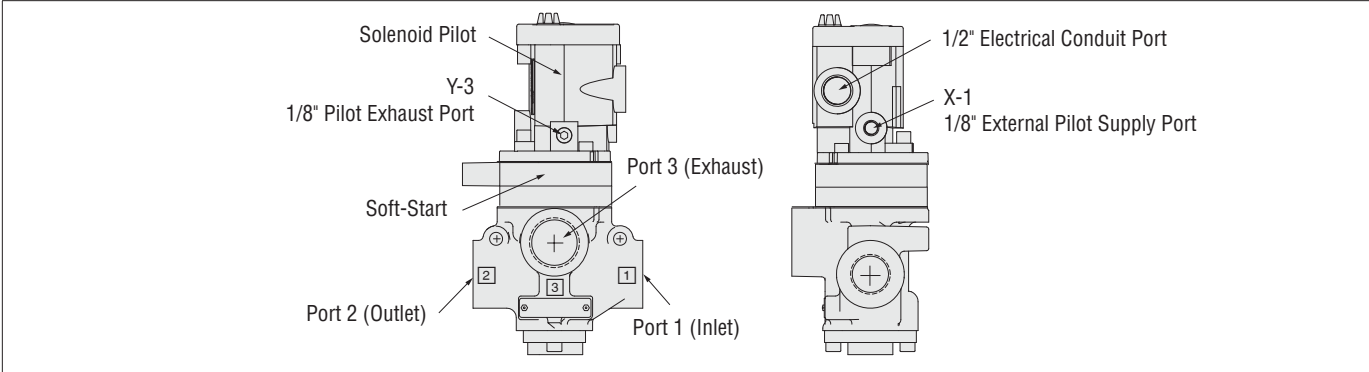
For additional information, and to assist you with piping and connectivity designs, our products are available in downloadable 2D drawings and 3D CAD models in a wide range of options including native formats, visit [www.rosscontrols.com](http://www.rosscontrols.com).



# Valve Technical Data

## 3/2 Solenoid Pilot Controlled Valves

DIMENSIONS		Inches (mm)
Body Size 3/8		
		
Body Size 3/4		
		
Body Size 1-1/4		
		
For additional information, and to assist you with piping and connectivity designs, our products are available in downloadable 2D drawings and 3D CAD models in a wide range of options including native formats, visit <a href="http://www.rosscontrols.com">www.rosscontrols.com</a> .		

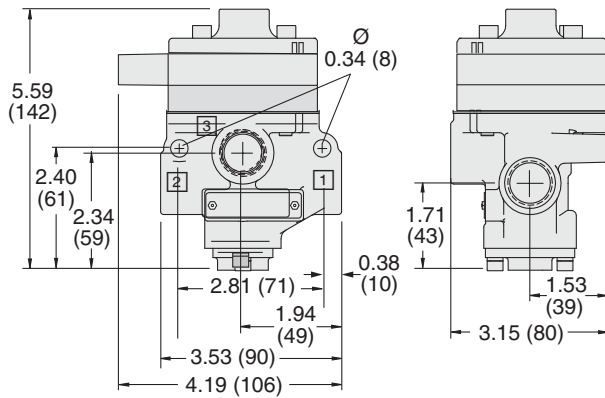


## 3/2 Pressure Controlled Valves

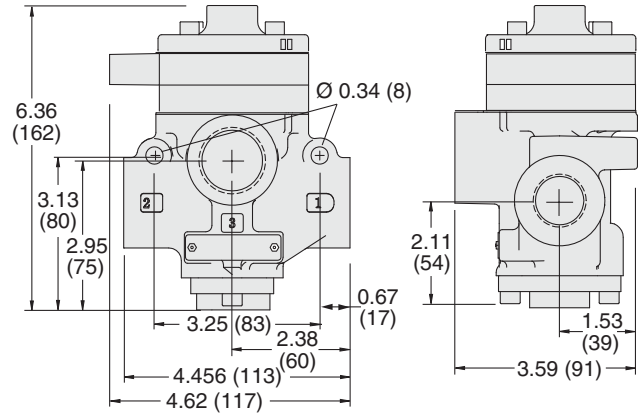
### DIMENSIONS

Inches (mm)

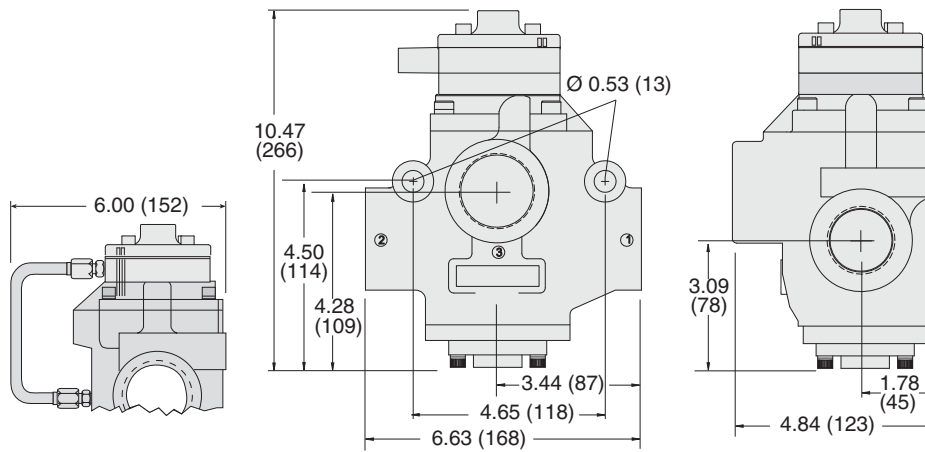
Body Size 3/8



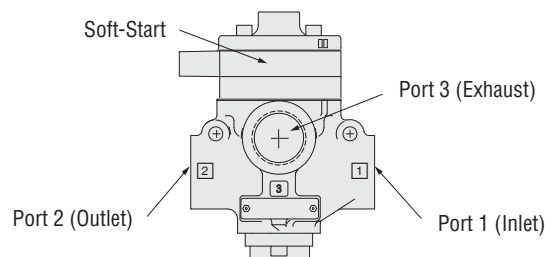
Body Size 3/4



Body Size 1-1/4



For additional information, and to assist you with piping and connectivity designs, our products are available in downloadable 2D drawings and 3D CAD models in a wide range of options including native formats, visit [www.rosscontrols.com](http://www.rosscontrols.com).



ENERGY RELEASE VERIFICATION						
Pressure Switch	Verification Type	Installation Location	Connector Type	Model Number	Port Thread	Factory Preset psi (bar)
	Electrical	Downstream	DIN EN 175301-803 Form A	586A86	1/8 NPT	5 (0.3) falling
Pinout						
DIN EN 175301-803 Form A						
<div><div><div><div>2</div><div>[</div><div>3</div><div>]</div><div>1</div></div><div><div>4</div></div></div><div><div><div>1</div><div>3</div><div>2</div></div><div><div></div></div></div></div> <div><div>1 - Common</div><div>2 - Normally Closed</div><div>3 - Normally Open</div><div>4 - Ground (Not Used)</div></div>						

## EXHAUST SILENCERS

Silencers	Port Size	Thread Type	Model Number		Flow Avg. C <sub>v</sub>	Pressure Range psig (bar)
			R/Rp Thread	NPT Thread		
	1/2	Male	D5500A4003	5500A4003	4.7	0-290 (0-20) maximum
	1	Male	D5500A6003	5500A6003	15	
	1-1/2	Female	D5500A8001	5500A8001	30	

## FEMALE SILENCER CONNECTORS

Hex Nipples	Material	Fitting Pipe Size	Thread Type	Model Number	
				BSPT Thread	NPT Thread
	Steel	1-1/2	Male - Male	122J39	488J27

## SOLENOID PILOT OPTIONS

Indicator Light Kits	Kit Number					
	24 V DC		110-120 V AC, 50-60 Hz		230 V AC, 50-60 Hz	
	862K87-W		862K87-Z		862K87-Y	

Manual Override Kits	Flush Button		Extended Button		Extended Button with Palm	
	Locking Type	Kit Number	Locking Type	Kit Number	Locking Type	Kit Number
	Non-Locking	790K87	Non-Locking	791K87	Non-Locking	984H87
	Locking	792K87				
	Each of the buttons in the override kits is made of metal and is spring-returned. The locking type button, however, can be kept in the actuated position by turning the slot in the top of the button with a screwdriver.					





# CAUTIONS, WARNINGS And STANDARD WARRANTY



ROSS OPERATING VALVE, ROSS CONTROLS®, ROSS DECCO®, and AUTOMATIC VALVE INDUSTRIAL, collectively the "ROSS Group".

## PRE-INSTALLATION or SERVICE

1. Before servicing a valve or other pneumatic component, be sure all sources of energy are turned off, the entire pneumatic system is shut down and exhausted, and all power sources are locked out (ref: OSHA 1910.147, EN 1037).
2. All ROSS Group Products, including service kits and parts, should be installed and/or serviced only by persons having training and experience with pneumatic equipment. Because any product can be tampered with and/or need servicing after installation, persons responsible for the safety of others or the care of equipment must check ROSS Group Products on a regular basis and perform all necessary maintenance to ensure safe operating conditions.
3. All applicable instructions should be read and complied with before using any fluid power system to prevent harm to persons or equipment. In addition, overhauled or serviced valves must be functionally tested prior to installation and use. If you have any questions, call your nearest ROSS Group location.
4. Each ROSS Group Product should be used within its specification limits. In addition, use only ROSS Group components to repair ROSS Group Products.

### WARNINGS:

***Failure to follow these instructions can result in personal injury and/or property damage.***

## FILTRATION and LUBRICATION

1. Dirt, scale, moisture, etc., are present in virtually every air system. Although some valves are more tolerant of these contaminants than others, best performance will be realized if a filter is installed to clean the air supply, thus preventing contaminants from interfering with the proper performance of the equipment. The ROSS Group recommends a filter with a 5-micron rating for normal applications.
2. All standard ROSS Group filters and lubricators with polycarbonate plastic bowls are designed for compressed air applications only. Use the metal bowl guard, where provided, to minimize danger from high pressure fragmentation in the event of bowl failure. Do not expose these products to certain fluids, such as alcohol or liquefied petroleum gas, as they can cause bowls to rupture, creating a combustible condition and hazardous leakage. Immediately replace crazed, cracked, or deteriorated bowls.
3. Only use lubricants which are compatible with materials used in the valves and other components in the system. Normally, compatible lubricants are petroleum base oils with oxidation inhibitors, an aniline point between 180°F (82°C) and 220°F (104°C), and an ISO 32, or lighter, viscosity. Avoid oils with

phosphate type additives which can harm polyurethane components, potentially leading to valve failure which risks personal injury, and/or damage to property.

### WARNINGS:

***Failure to follow these instructions can result in personal injury and/or property damage.***

## AVOID INTAKE/EXHAUST RESTRICTION

1. Do not restrict air flow in the supply line. To do so could reduce the pressure of the supply air below minimum requirements for the valve and thereby causing erratic action.
2. Do not restrict a valve's exhaust port as this can adversely affect its operation. Exhaust silencers must be resistant to clogging and must have flow capacities at least as great as the exhaust capacities of the valves. Contamination of the silencer can result in reduced flow and increased back pressure.

**WARNINGS:** *Failure to follow these instructions can result in personal injury and/or property damage.*

## SAFETY APPLICATIONS

1. Mechanical Power Presses and other potentially hazardous machinery using a pneumatically controlled clutch and brake mechanism must use a press control double valve with a monitoring device. A double valve without a self-contained monitoring device should be used only in conjunction with a control system which assures monitoring of the valve. All double valve installations involving hazardous applications should incorporate a monitoring system which inhibits further operation of the valve and machine in the event of a failure within the valve mechanism.
2. Safe Exhaust (dump) valves without a self-contained monitoring device should be used only in conjunction with a control system which assures monitoring of the valve. All Safe Exhaust valve installations should incorporate a monitoring system which inhibits further operation of the valve and machine in the event of a failure within the valve mechanism.
3. Per specifications and regulations, the ROSS L-O-X® and L-O-X® with EEZ-ON®, N06 and N16 Series operation products are defined as energy isolation devices, NOT AS EMERGENCY STOP DEVICES.

### WARNINGS:

***Failure to follow these instructions can result in personal injury and/or property damage.***

## STANDARD WARRANTY

All products sold by the ROSS Group are warranted for a one-year period [with the exception of Filters, Regulators and Lubricators ("FRLs") which are warranted for a period of seven (7) years] from the date of purchase. All products are, during their respective warranty periods, warranted to be free of defects in material and workmanship. The ROSS Group's obligation under this warranty is limited to repair, replacement or refund of the purchase price paid for products which the ROSS Group has determined, in its sole discretion, are defective. All warranties become void if a product has been subject to misuse, misapplication, improper maintenance, modification or tampering. Products for which warranty protection is sought must be returned to the ROSS Group freight prepaid.

THE WARRANTY EXPRESSED ABOVE IS IN LIEU OF AND EXCLUSIVE OF ALL OTHER WARRANTIES AND THE ROSS GROUP EXPRESSLY DISCLAIMS ALL OTHER WARRANTIES EITHER EXPRESSED OR IMPLIED WITH RESPECT TO MERCHANTABILITY OR FITNESS FOR A PARTICULAR PURPOSE. THE ROSS GROUP MAKES NO WARRANTY WITH RESPECT TO ITS PRODUCTS MEETING THE PROVISIONS OF ANY GOVERNMENTAL OCCUPATIONAL SAFETY AND/OR HEALTH LAWS OR REGULATIONS. IN NO EVENT IS THE ROSS GROUP LIABLE TO PURCHASER, USER, THEIR EMPLOYEES OR OTHERS FOR INCIDENTAL OR CONSEQUENTIAL DAMAGES WHICH MAY RESULT FROM A BREACH OF THE WARRANTY DESCRIBED ABOVE OR THE USE OR MISUSE OF THE PRODUCTS. NO STATEMENT OF ANY REPRESENTATIVE OR EMPLOYEE OF THE ROSS GROUP MAY EXTEND THE LIABILITY OF THE ROSS GROUP AS SET FORTH HEREIN.





AMERICAS	ROSS CONTROLS	USA	Tel: +1-248-764-1800	www.rosscontrols.com
	ROSS CONTROLS CANADA Ltd.	Canada	Tel: +1-416-251-7677	www.rosscanada.com
	ROSS DO BRASIL EIRELI	Brazil	Tel: +55-11-4335-2200	www.rosscontrols.com.br
EUROPE	ROSS EUROPA GmbH	Germany	Tel: +49 (0)6103-7597-100	www.rosseuropa.com
	ROSS FRANCE SAS	France	Tel: +33-(0)1-49-45-65-65	www.rossfrance.com
	ROSS PNEUMATROL Ltd.	United Kingdom	Tel: +44 (0)1254 872277	www.rossuk.co.uk
ASIA & PACIFIC	ROSS CONTROLS INDIA Pvt. Ltd.	India	Tel: +91-44-2624-9040	www.rosscontrolsindia.com
	ROSS CONTROLS (CHINA) Ltd.	China	Tel: +86-21-6915-7961	www.rosscontrolschina.com
	ROSS ASIA K.K.	Japan	Tel: +81-42-778-7251	www.rossasia.co.jp
	AUTOMATIC VALVE INDUSTRIAL LLC	USA	Tel: +1-248-474-6700	www.automaticvalve.com
	ROSS DECCO COMPANY	USA	Tel: +1-248-764-1800	www.rossdecco.com
	ROSS PNEUMATROL Ltd.	United Kingdom	Tel: +44 (0)1254 872277	www.pneumatrol.com
	manufactIS GmbH	Germany	Tel: +49 (0)2013-16843-0	www.manufactis.net

## Full-Service Global Locations

### There are ROSS Distributors Throughout the World

*To meet your requirements across the globe, ROSS distributors are located throughout the world. Through ROSS or its distributors, guidance is available for the selection of ROSS products, both for those using fluid power components for the first time and those designing complex systems.*

*Other literature is available for engineering, maintenance, and service requirements.*

*If you need products or specifications not shown in this catalog, please visit ROSS' website, contact ROSS or your ROSS distributor. The ROSS Support Team will be happy to assist you in selecting the best product for your application.*

*For a current list of countries and local distributors, visit ROSS' at [www.rosscontrols.com](http://www.rosscontrols.com).*