

# Thomas & Betts

## HANDS FREE SWIVEL HANGERS

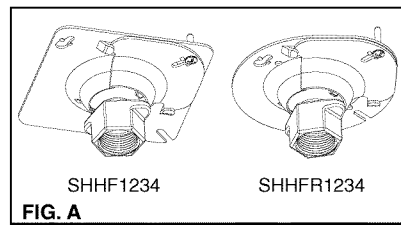
### Catalog Numbers:

**SHHF1234** Square Hands Free Swivel Hanger for 4" Square Steel Boxes - can be used with 1/2" or 3/4" threaded pipe.

**SHHFR1234** Round Hands Free Swivel Hanger for 3-1/2" to 4" Octagon Steel Boxes - can be used with 1/2" or 3/4" threaded pipe.

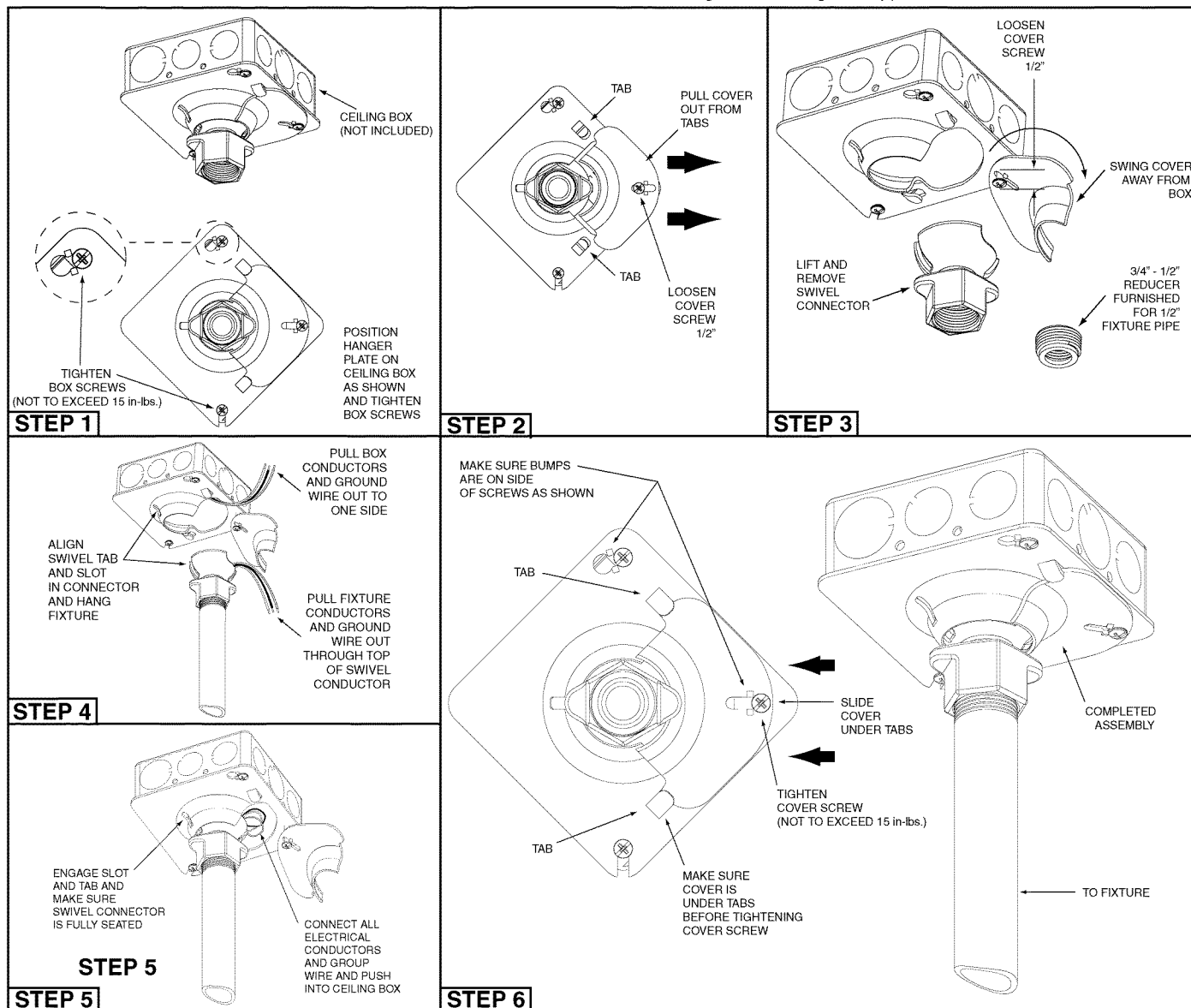
IMPORTANT: READ ALL INSTRUCTIONS BEFORE BEGINNING

**WARNING**  
BE SURE POWER IS OFF



### NOTE:

1. The Round and Square Hands Free Swivel Hangers are shown in FIG. A.
2. The installation steps are the same for either style swivel hanger.
3. Designed for 50 lbs. maximum fixture support.
4. Not designed for ceiling fan support.



**WARRANTY:** Thomas & Betts sells this product with the understanding that the user will perform all necessary tests to determine the suitability of this product for the user's intended application. Thomas & Betts warrants that this product will be free from defects in materials and workmanship for a period of two (2) years following the date of purchase. Upon prompt notification of any warranted defect, Thomas & Betts will, at its option, repair or replace the defective product or refund the purchase price. Proof of purchase is required. Misuse or unauthorized modification of the product voids all warranties.

**Limitations and Exclusions:** THE ABOVE WARRANTY IS THE SOLE WARRANTY CONCERNING THIS PRODUCT, AND IS IN LIEU OF ALL OTHER WARRANTIES EXPRESS OR IMPLIED, INCLUDING BUT NOT LIMITED TO ANY IMPLIED WARRANTY OF MERCHANTABILITY OR FITNESS FOR A PARTICULAR PURPOSE, WHICH ARE SPECIFICALLY DISCLAIMED. LIABILITY FOR BREACH OF THE ABOVE WARRANTY IS LIMITED TO COST OF REPAIR OR REPLACEMENT OF THE PRODUCT, AND UNDER NO CIRCUMSTANCES WILL THOMAS & BETTS BE LIABLE FOR ANY INDIRECT, SPECIAL, INCIDENTAL OR CONSEQUENTIAL DAMAGES.