



Applications:

- Myers™ hubs are used in the termination of electrical circuits through wall of the enclosure
- Designed for use indoors or outdoors with rigid conduit and IMC
- Ideal for pharmaceutical, chemical and food processing, pulp/paper, nuclear, solar and commercial construction applications
- Resistant to a variety of chemicals, including acetic, citric and salt water
- Special design of o-ring gasket provides excellent environmental ratings and chemical resistance
- Hub is provided with a stainless steel ground nut

Features:

- Wide range of styles, trade sizes and materials to meet customer requirements and preferences
- Multiple certifications provide users peace of mind
- Easy installation and smooth pulling service for labor savings
- Tapered female threads for rigid/IMC conduit, NPSM male threads

Certifications and compliances:

- NEC/CEC:
 - Class I, Division 2
 - Class II, Divisions 1 & 2
 - Class III, Divisions 1 & 2
 - Class I, Zone 1, AEx e II
 - Class I, Zone 1, Ex e II
- cULus Listed
 - UL Standard 514B
 - CSA Standard C22.2 No. 18
- NEMA Type 2, 3, 3R, 4, 4X, 12 (std. hub and ground hub)
- IEC:
 - STGK:
 - ATEX Certified ITS12ATEX47591X Ex  II 2G Ex e IIC Gb to EN 60079-0:2009, EN 60079-7:2007, and EN 60079-14 Standards Ta -15°C to 120°C
 - IECEX Certified IECEX ETL 12.0009X Ex e IIC Gb to IEC 60079-0:2007-10, Edition 5, IEC 60079-7:2006-07, Edition 4 and IEC 60079-14 Standards Ta -15°C to 120°C
 - IP66
 - SSTGK M2:
 - ATEX Certified DEMKO 18 ATEX 2002X,  II 2G Ex eb IIC Gb to EN IEC 60079-0:2018 and EN IEC 60079-7:2015 +A1:2018 standards Ta -55°C to 180°C
 - IECEX Certified IECEX UL 18.0007X, Ex eb IIC Gb to IEC 60079-0:2017 and IEC 60079-7:2017 standards Ta -55°C to 180°C
 - IP66



Standard materials:

- Nut: Zinc (Zamek-2, Zamek-3), aluminum (Al 360), stainless (316)
- Body: Zinc (Zamek-2, Zamek-3), aluminum (Al 360), stainless (316)
- Insuliner: Lexan, PEEK GF15 (SSTGK M2 only)
- O-Ring: Viton; silicone (SSTGK M2 only)
- Ground Screw: Steel/stainless steel

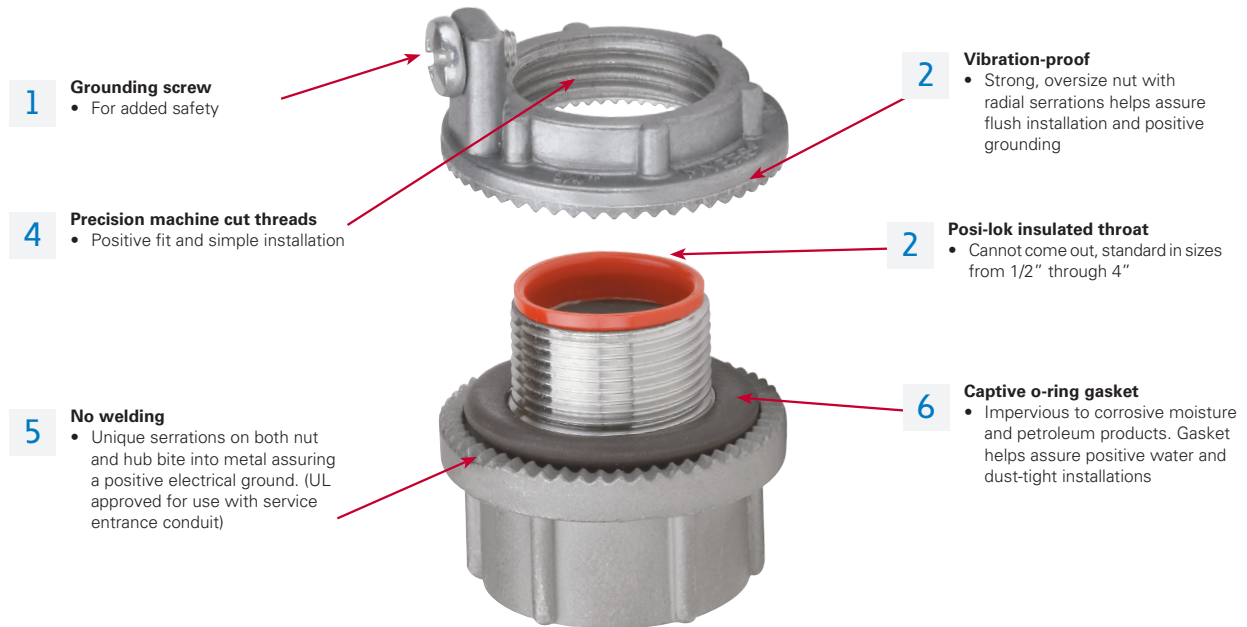
Standard finishes:

- Aluminum – natural
- Zinc – natural
- Stainless – natural

Options:

- | Description | Suffix |
|--|--------|
| • Nickel-chrome plate finish (available on zinc hubs only) | CP |

Myers hubs design features



Available in trade sizes 3/8" through 6"

Hub Basic Scru-Tite™

Hubs are ideal for general use with rigid conduit. Provides positive seal and electrical ground.



Available in trade sizes 1/2" through 6"

Ground hub

Combines all of the features of the Hub Basic Scru-Tite plus the additional feature of the grounding screw on the locknut.

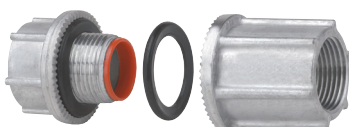


Available in trade sizes 1/2" through 4"

ATEX rated hub

Hub is listed for use in hazardous (classified) locations to IECEx-ATEX certifications. Ideal for global requirements and OEM's shipping material worldwide.

Stainless steel now rated for -55°C to 180°C



Through-bulkhead fitting

Hubs are the perfect method for installing hubs on cast boxes or through thicker walls.



Metric to NPT adapter

Used to convert a threaded metric entry to a NPT entry.



Drain plugs

Designed to install in the bottom of an enclosure to drain any accumulated condensation. Available in aluminum or stainless steel construction.



Cap-off

Designed to install in enclosure to provide environmental cap for unused entries or knockouts.

ATEX HAZARDOUS LOCATION HUB WITH INCREASED SAFETY GROUND TERMINAL

Zinc – NEMA 2, 3, 3R, 4, 4X; IP66



II 2 G Ex e IIC Gb Ta (-15°C to 120°C)

IECEx – Ex e IIC Gb Ta (-15°C to 120°C)

Class I, Zone 1, AEx e II

Class I, Zone 1, Ex e II

UL File No. E-59509



Cat. #	Size	Unit qty.	Wt. lbs. per 100	Max. Copper Grd. Wire Size	
				CSA®	UL®
STGK 1	1/2"	10	20	#8	#8
STGK 2	3/4"	10	31	#8	#8
STGK 3	1"	10	44	#8	#8
STGK 4	1 1/4"	5	60	#8	#8
STGK 5	1 1/2"	5	73	#6	#8
STGK 6	2"	5	99	#4	#8
STGK 7	2 1/2"	2	145	#2	#6
STGK 8	3"	2	243	1/0	#6
STGK 9	3 1/2"	2	304	2/0	#6
STGK 10	4"	2	327	2/0	#4

① Use of wire terminal is required by CSA and recommended by UL for wire gauges over 10 AWG.

ATEX HAZARDOUS LOCATION HUB WITH INCREASED SAFETY GROUND TERMINAL

316 Stainless steel – NEMA 2, 3, 3R, 4, 4X; IP66



II 2 G Ex eb IIC Gb Ta (-55°C to 180°C)

IECEx – Ex eb IIC Gb Ta (-55°C to 180°C)

Class I, Zone 1, AEx e II

Class I, Zone 1, Ex e II

UL File No. E-187273



Cat. #	Size	Unit qty.	Wt. lbs. per 100	Max. Copper Grd. Wire Size	
				CSA®	UL®
SSTGK 1 M2	1/2"	10	33	#8	#8
SSTGK 2 M2	3/4"	10	44	#8	#8
SSTGK 3 M2	1"	10	60	#8	#8
SSTGK 4 M2	1 1/4"	5	76	#8	#8
SSTGK 5 M2	1 1/2"	5	103	#6	#8
SSTGK 6 M2	2"	5	137	#4	#8
SSTGK 7 M2①	2 1/2"	2	185	#2	#6
SSTGK 8 M2①	3"	2	281	1/0	#6
SSTGK 9 M2①	3 1/2"	2	331	2/0	#6
SSTGK 10 M2①	4"	2	399	2/0	#4

① Use of wire terminal is required by CSA and recommended by UL for wire gauges over 10 AWG.

① Not UL Listed as means of grounding and bonding.

THROUGH-BULKHEAD FITTING – ZINC

UL File No. E-27258



Cat. #	Size	Unit qty.	Wt. lbs. per 100
STTB 1	1/2"	5	30
STTB 2	3/4"	5	50
STTB 3	1"	5	70
STTB 4	1 1/4"	5	85
STTB 5	1 1/2"	5	110
STTB 6	2"	5	152
STTB 7	2 1/2"	4	280
STTB 8	3"	2	408
STTB 9	3 1/2"	2	468
STTB 10	4"	2	533

THROUGH-BULKHEAD FITTING – ALUMINUM

UL File No. E-27258



Cat. #	Size	Unit qty.	Wt. lbs. per 100
STTBA 1	1/2"	5	11
STTBA 2	3/4"	5	21
STTBA 3	1"	5	31
STTBA 4	1 1/4"	5	40
STTBA 5	1 1/2"	5	50
STTBA 6	2"	5	65
STTBA 7	2 1/2"	4	106
STTBA 8	3"	2	175

THROUGH-BULKHEAD FITTING – ZINC WITHOUT NIPPLES

Packaged as two pieces unassembled

UL File No. E-27258



Cat. #	Size	Unit qty.	Wt. lbs. per 100
STTTB 1	1/2"	5	35
STTTB 2	3/4"	5	58
STTTB 3	1"	5	85
STTTB 4	1 1/4"	5	105
STTTB 5	1 1/2"	5	135
STTTB 6	2"	5	169

THROUGH-BULKHEAD FITTING – ALUMINUM WITHOUT NIPPLES

Packaged as two pieces unassembled

UL File No. E-27258



Cat. #	Size	Unit qty.	Wt. lbs. per 100
STTTBA 1	1/2"	5	16
STTTBA 2	3/4"	5	25
STTTBA 3	1"	5	35
STTTBA 4	1 1/4"	5	40
STTTBA 5	1 1/2"	5	50
STTTBA 6	2"	5	75