

12 13 14 15 16 17 18 19 20

A

B

C

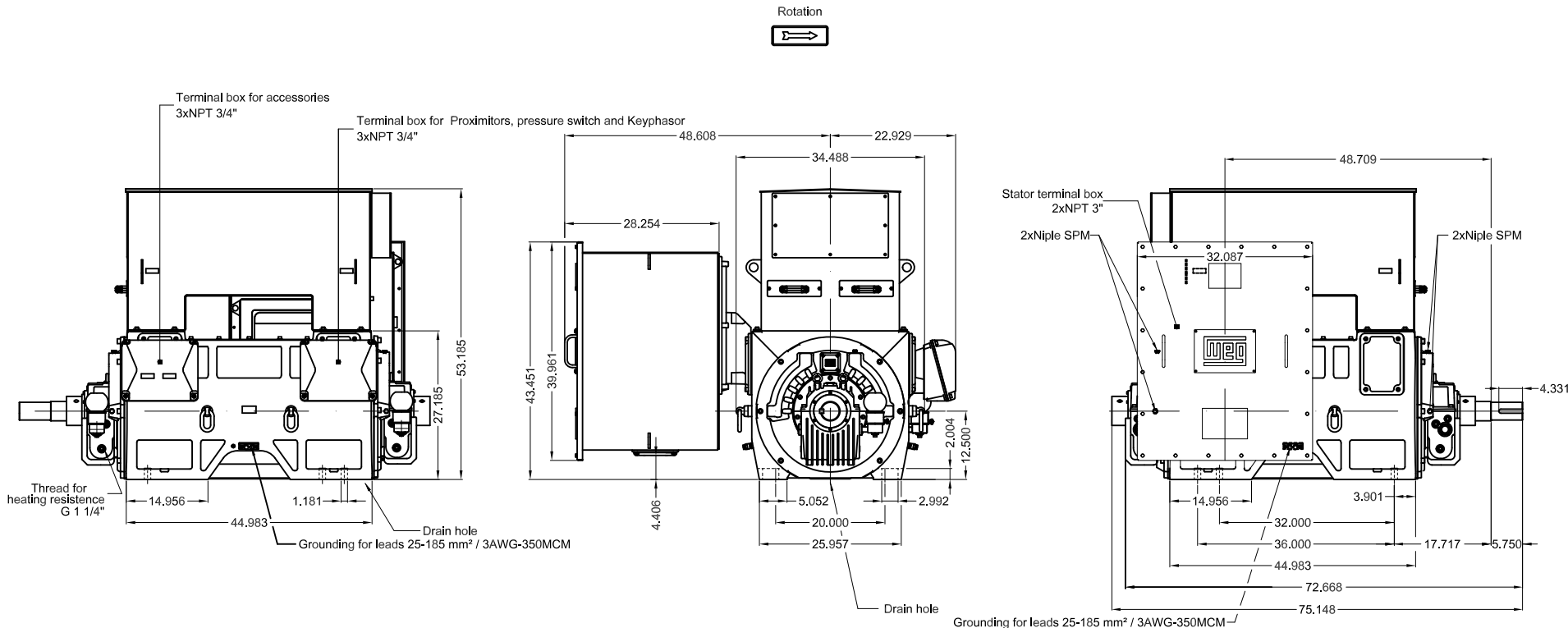
D

E

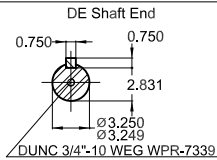
F

G

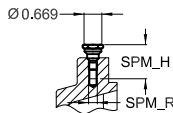
H



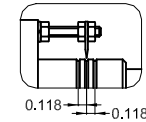
Connection cables 2000+100mm length from terminal box
With jacking screws
Designed for Bently Nevada proximitor sensors (2 per bearing) and 1 keyphasor
Connection cables coiled inside the main terminal box
Nameplate of the accessory terminal box
With two nameplates supplied loose, one according to auxiliary FD data
Space heaters 110 to 127 V
Terminal with 13 mm diameter hole for connection bolt
DE and NDE sleeve bearings designed for space heaters
NDE Sleeve Bearing - electrically insulated
Vibration grade according to API 541/547
Stainless steel screws - AISI 316
Provision for pressure switch sensor
304 stainless steel filter on air inlet
Bearings with glass Trico Oilers
Frame designed for dowel pins
Terminal boxes can be rotated in 90° steps
Main terminal box with space heaters
Color RAL 5009
Painting plan 212P
Mounting NEMA F-1
Position of the stator terminal box can be changed (right / left)
Mounting B3R(D)

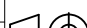



Vibration sensor studs detail



Total axial clearance: 0.236



400 HP 02 Poles 60 Hz 2300/4000 V										A	
WEC HOUSE ACCOUNT ENERGY											
								1:20			
		ALT. CONF. PCR 100000193138			GABRIELID		SANDRESSA		SANDRESSA 21.12.2023 08		
		PCR 100000182827			RBOECK		JACKSONHM		JACKSONHM 01.06.2023 07		
ECM		LOC		SUMMARY OF MODIFICATIONS			EXECUTED		CHECKED RELEASED DATE VER		
EXECUTED		DOGE		 THREE PH. MOTOR W60 HAZARDOUS AREA FRAME 5010/11 IP24 ODP WPII		1275848642					
CHECKED		LUCASH				WDD 08					
RELEASED		LUCASH									
REL. DATE		17.06.2022									
		WMO		Jaragua do Sul			Product Engineering		SHEET 1 / 1		