

12345678910

A

B

C

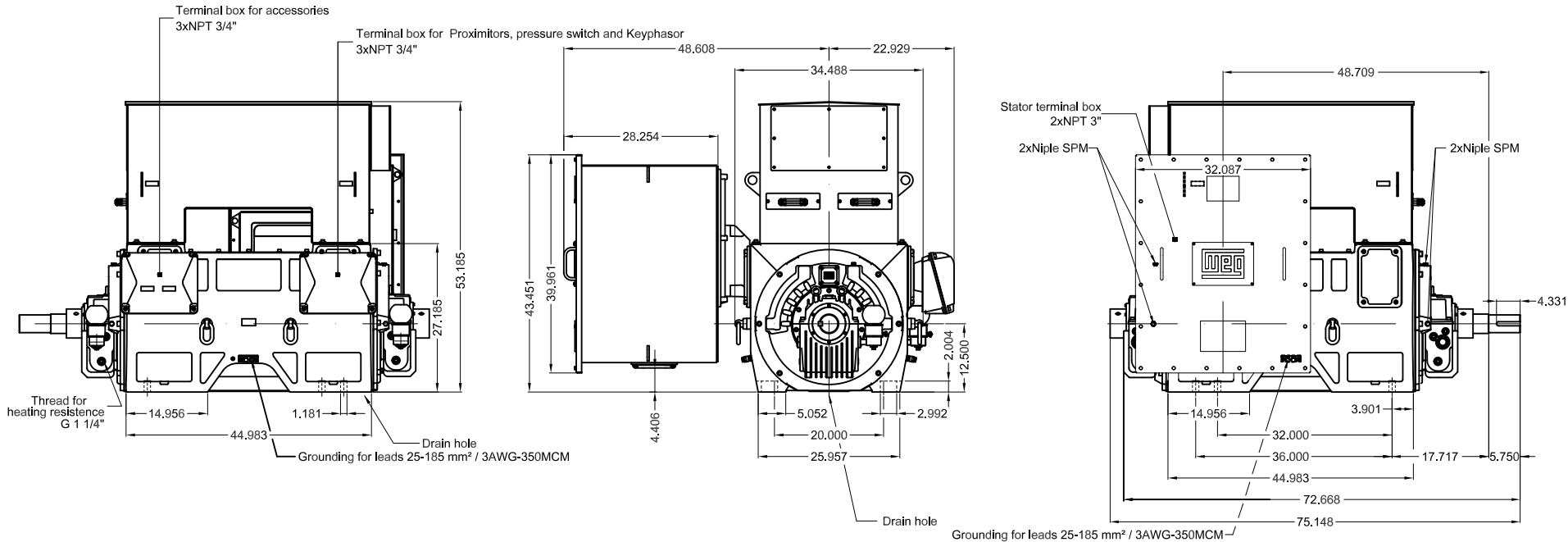
D

E

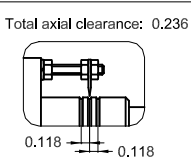
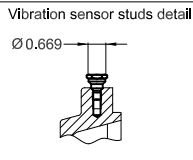
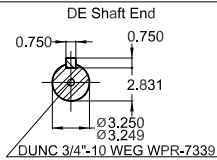
F

G

H



- Main terminal box can be rotated in 90° steps
- Connection cables 2000+100mm length from terminal box
- With jacking screws
- Designed for Bently Nevada proximitor sensors (2 per bearing) and 1 keyphasor
- NDE balancing disc
- Connection cables coiled inside the main terminal box
- Nameplate of the accessory terminal box
- With two nameplates supplied loose, one according to auxiliary FD data
- Space heaters 110 to 127 V
- Terminal with 13 mm diameter hole for connection bolt
- DE and NDE sleeve bearings designed for space heaters
- Tightening torque of cover screws and bearings = 69Nm
- Finish color Munsell 2.5 YR 6/14 inside of terminal box
- Vibration grade according to API 541/547
- Stainless steel screws - AISI 316
- Provision for pressure switch sensor
- 304 stainless steel filter on air inlet
- Bearings with glass Trico Oilers
- Frame designed for dowel pins
- Main terminal box with space heaters
- Color RAL 5009
- Painting plan 212P
- Mounting NEMA F-1
- Position of the stator terminal box can be changed (right / left)
- Mounting B3R(D)



900 HP 02 Poles 60 Hz 2300/4000 V							A
WEC HOUSE ACCOUNT ENERGY							
						1:20	
ALT. CONF. PCR 100000216986			GABRIELID	SANDRESSA	SANDRESSA	29.01.2024	05
ALT. CONF. PCR 100000193138			GABRIELID	SANDRESSA	SANDRESSA	20.12.2023	04
ECM	LOC	SUMMARY OF MODIFICATIONS			EXECUTED	CHECKED	RELEASED
EXECUTED	LUCASH	THREE PH. MOTOR W60 HAZARDOUS AREA FRAME 5010/11 IP24 ODP WP II			1306112337		
CHECKED	TBAZZANELLA				WDD   05		
RELEASED	TBAZZANELLA						
REL. DATE	12.09.2022	WMO	Jaragua do Sul	Product Engineering	SHEET	1 / 1	