

CX 01 UF/UM for 1 USB connector

The modular inserts must be installed in suitable frames which are then mounted in traditional enclosures or in COB panel support.

Single-sized modular units may be directly mounted inside MIXO ONE enclosures.

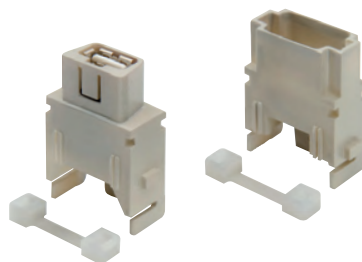
frames for modular units page:
316 - 317

MIXO ONE enclosures 369

WARNING

enclosures: bulkhead mounting housings, high construction housings or high construction hoods

housing for USB male connectors,
USB female - female connectors



patch cable USB



description

part No.

part No.

female insert with USB female - female connector ¹⁾
male insert without USB male connector (patch cable
to be ordered separately) ¹⁾

CX 01 UF
CX 01 UM




patch cable USB-A / USB-A, 2 m ²⁾

CW 2 UAM

²⁾ 5 m on request

- characteristics according to EN 61984:

1A 50V 0,8kV 3

- cULus (UL for USA and Canada),   

-   certified ¹⁾

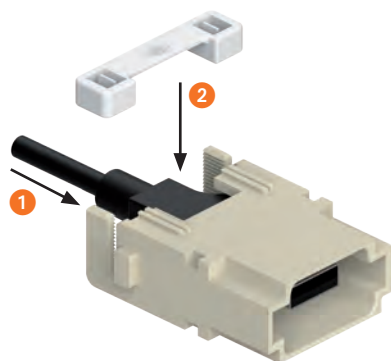
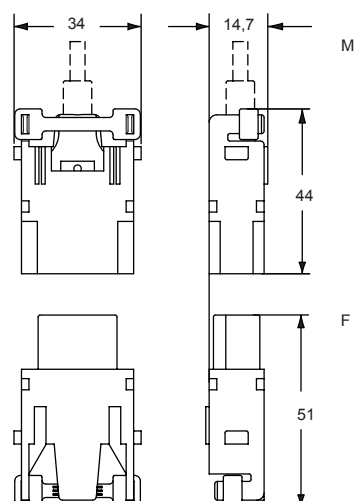
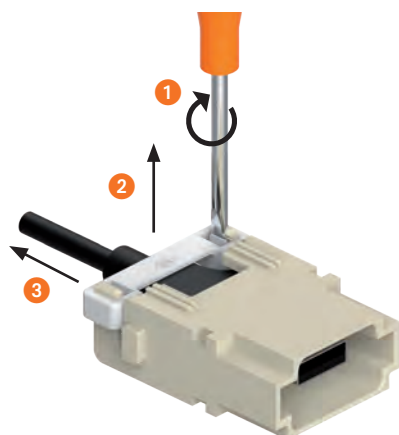
- insulation resistance: $\geq 10 \text{ G}\Omega$

- contact resistance: $\leq 3 \text{ m}\Omega$

USB connector features:

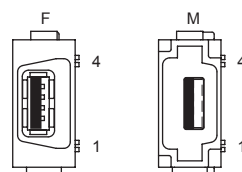
- USB-A / USB-A Hi-Speed - 2.0 insert

- temperature range: from -25 °C to +80 °C

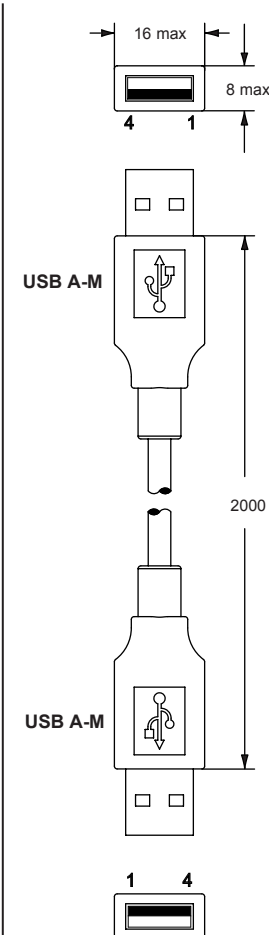
FIXING**REOPENING**

contacts side (front view)

side with reference arrow ▲



- 1 frame slot



1	—	1
2	—	2
3	—	3
4	—	4
SHIELD	—	SHIELD