

## CX 02 7F/7M 2 poles 70A - 1000V

The modular inserts must be installed in suitable frames which are then mounted in traditional enclosures\* or in COB panel support.

Single-sized modular units may be directly mounted inside MIXO ONE enclosures.

frames for modular units\* page: 317

MIXO ONE enclosures 369

\* enclosures: bulkhead mounting housings, high construction housings or high construction hoods

## modular units, crimp connections



## 70A silver plated crimp contacts



description

part No.

part No

without contacts (to be ordered separately)

female inserts for female contacts

male inserts for male contacts

CX 02 7F

CX 02 7M

70A female crimp contacts

10 mm<sup>2</sup> AWG 8 - 716 mm<sup>2</sup> AWG 6 - 525 mm<sup>2</sup> AWG 4 - 3

CX7FA 10

CX7FA 16

CX7FA 25

70A male crimp contacts

10 mm<sup>2</sup> AWG 8 - 716 mm<sup>2</sup> AWG 6 - 525 mm<sup>2</sup> AWG 4 - 3

CX7MA 10

CX7MA 16

CX7MA 25

silver plated

- characteristics according to EN 61984:

**70A 1000V 8kV 3****70A 1600V 12kV 2**

- cULus (UL for USA and Canada),

EAC certified

- rated voltage according to UL/CSA: 600V

- insulation resistance:  $\geq 10$  G $\Omega$ 

- ambient temperature limit: -40 °C ... +125 °C

- made of self-extinguishing thermoplastic resin

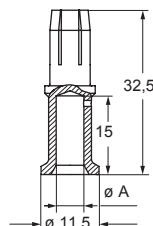
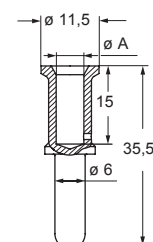
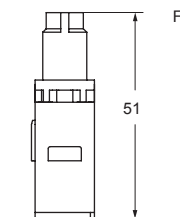
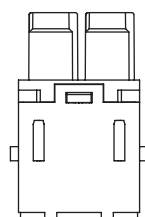
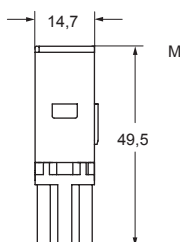
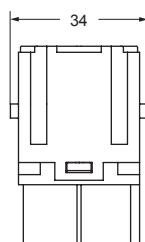
UL 94V-0

- mechanical life:  $\geq 500$  cycles- contact resistance:  $\leq 0,5$  m $\Omega$ 

- it is recommended to crimp the contacts with crimping tools homologated by ILME (please see the crimping tool section 70A contacts, CX7F and CX7M series) on pages 708 - 741

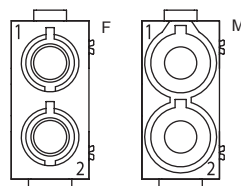
- C7ES removal tool

- for max. current load see the connector inserts derating diagram below; for more information see page 28



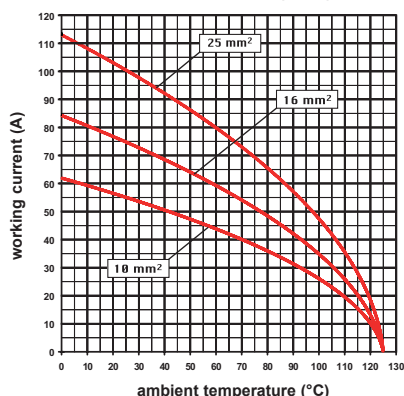
contacts side (front view)

side with reference arrow ▲



- 1 frame slot

CX 02 7, 2 poles connector inserts  
Maximum current load derating diagram



CX7F and CX7M contacts

conductor section (mm <sup>2</sup> )	conductor slot $\phi$ A (mm)	conductor stripping length (mm)
10	4,3	15
16	5,5	15
25	7,0	15